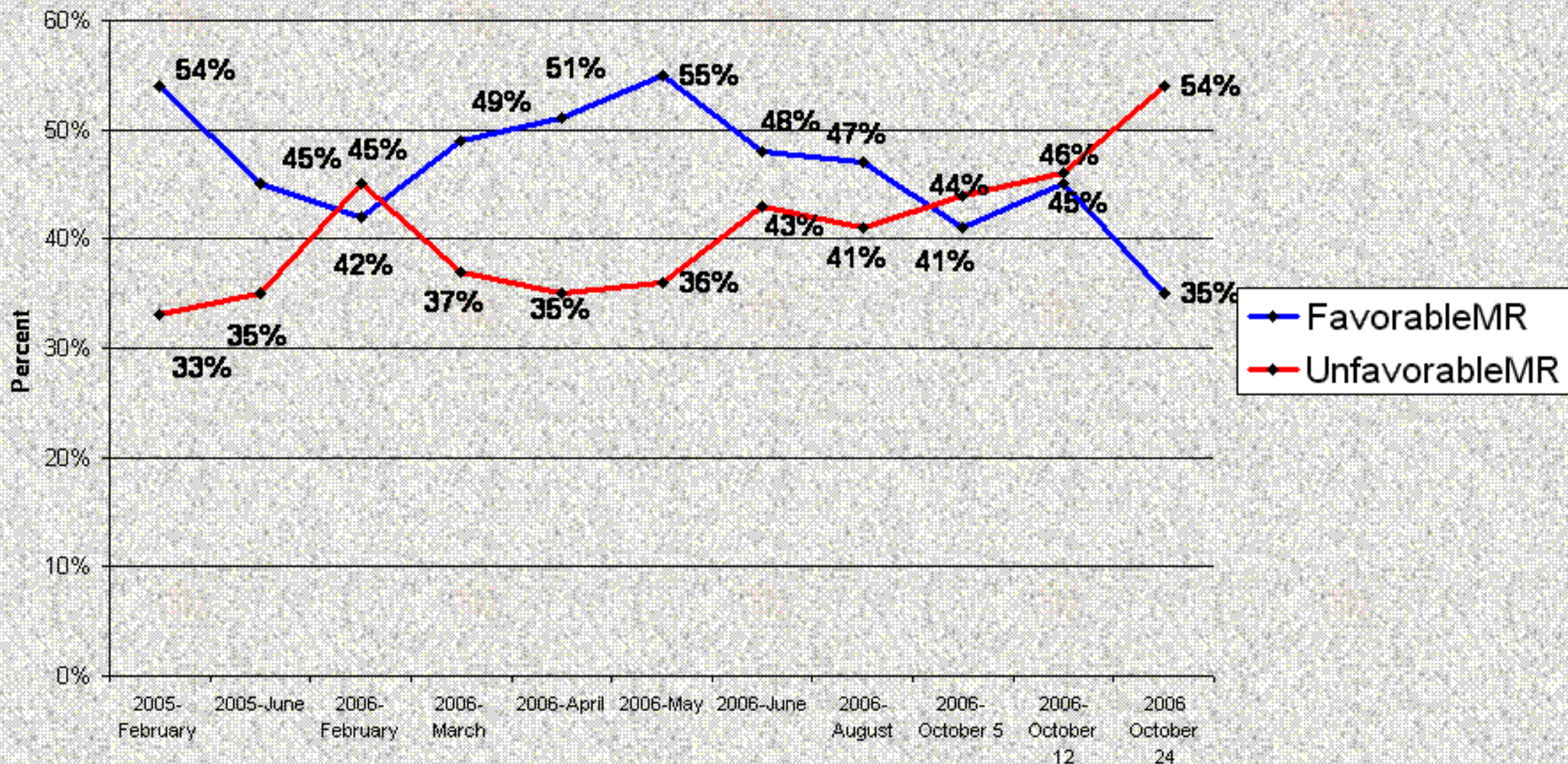
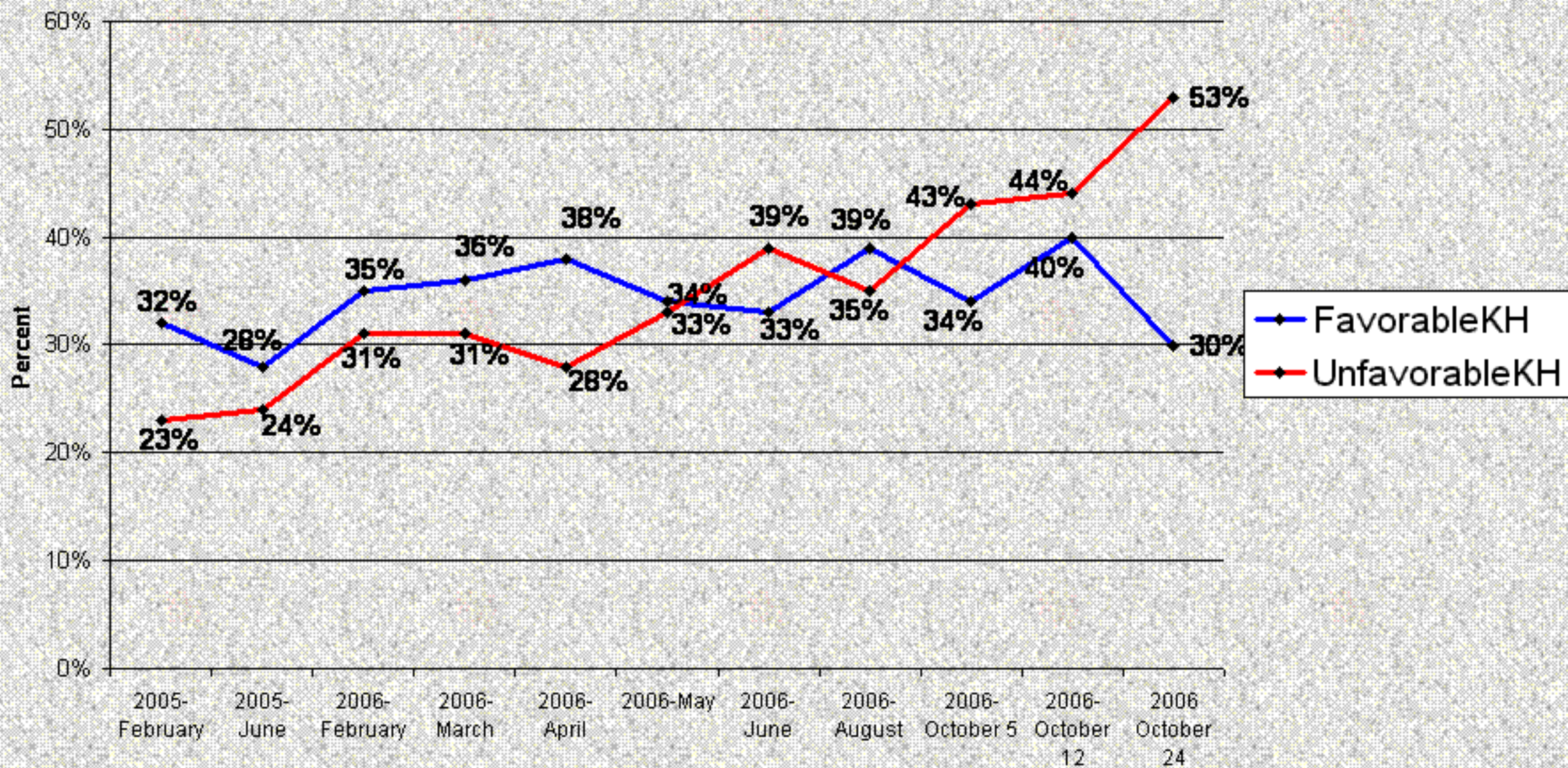


# Favorability Ratings of Governor Mitt Romney "Negative Explosion"



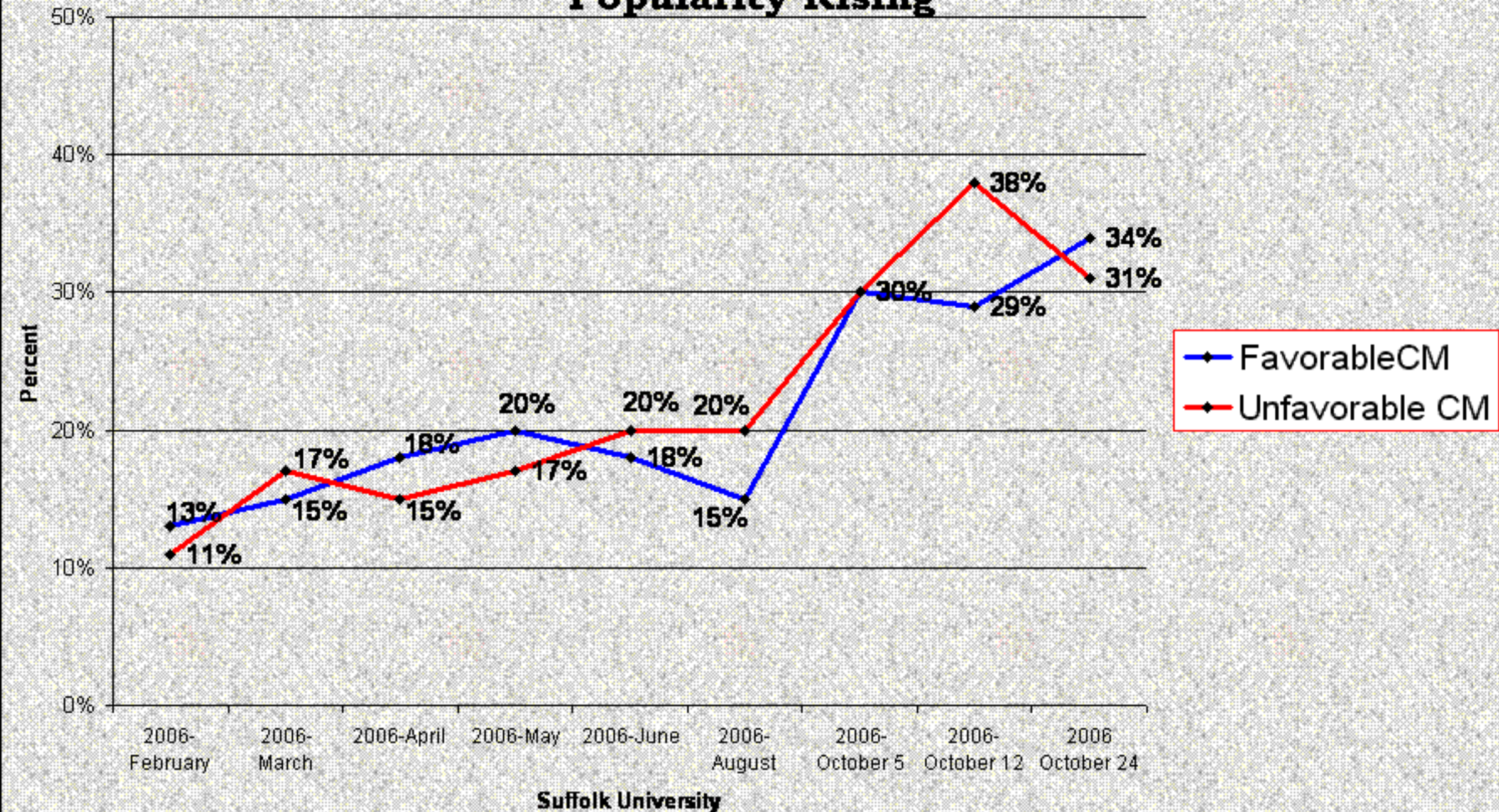
# Favorability Ratings of Republican Kerry Healey

## "Highest Negative on Record"

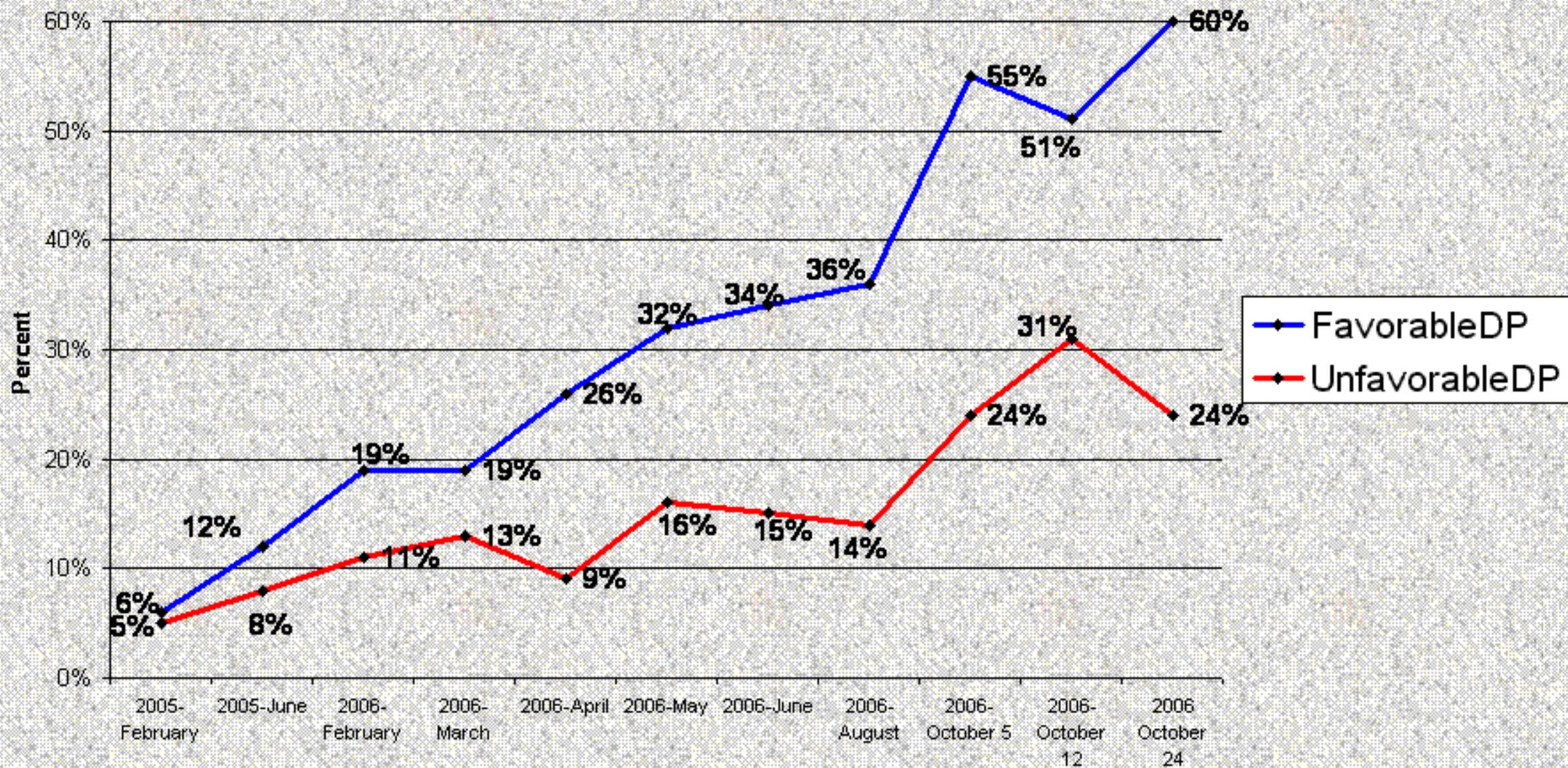


Suffolk University

# Favorability Ratings of Independent Christy Mihos "Popularity Rising"



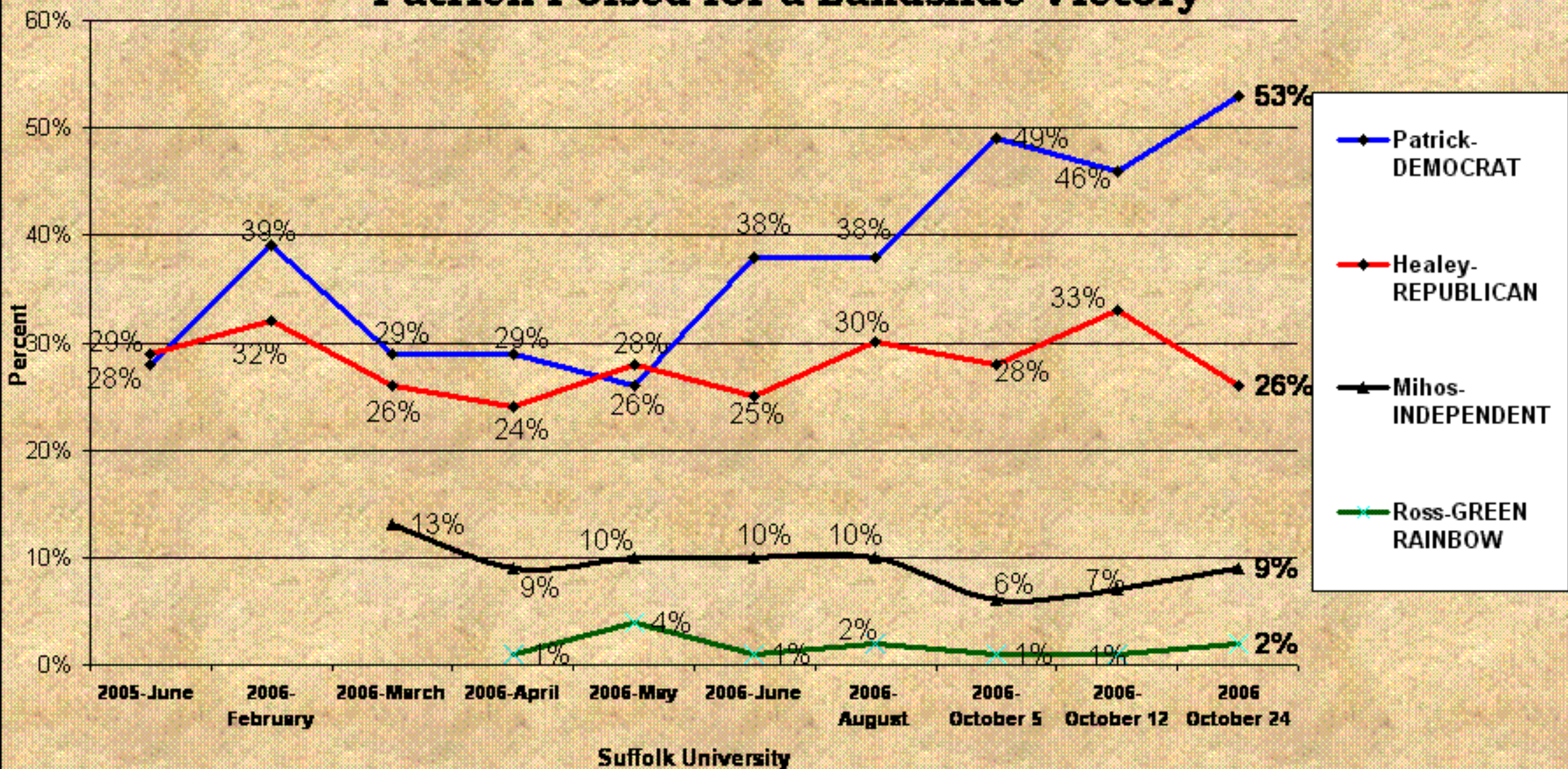
# Favorability Ratings of Democrat Deval Patrick "Textbook Favorability"



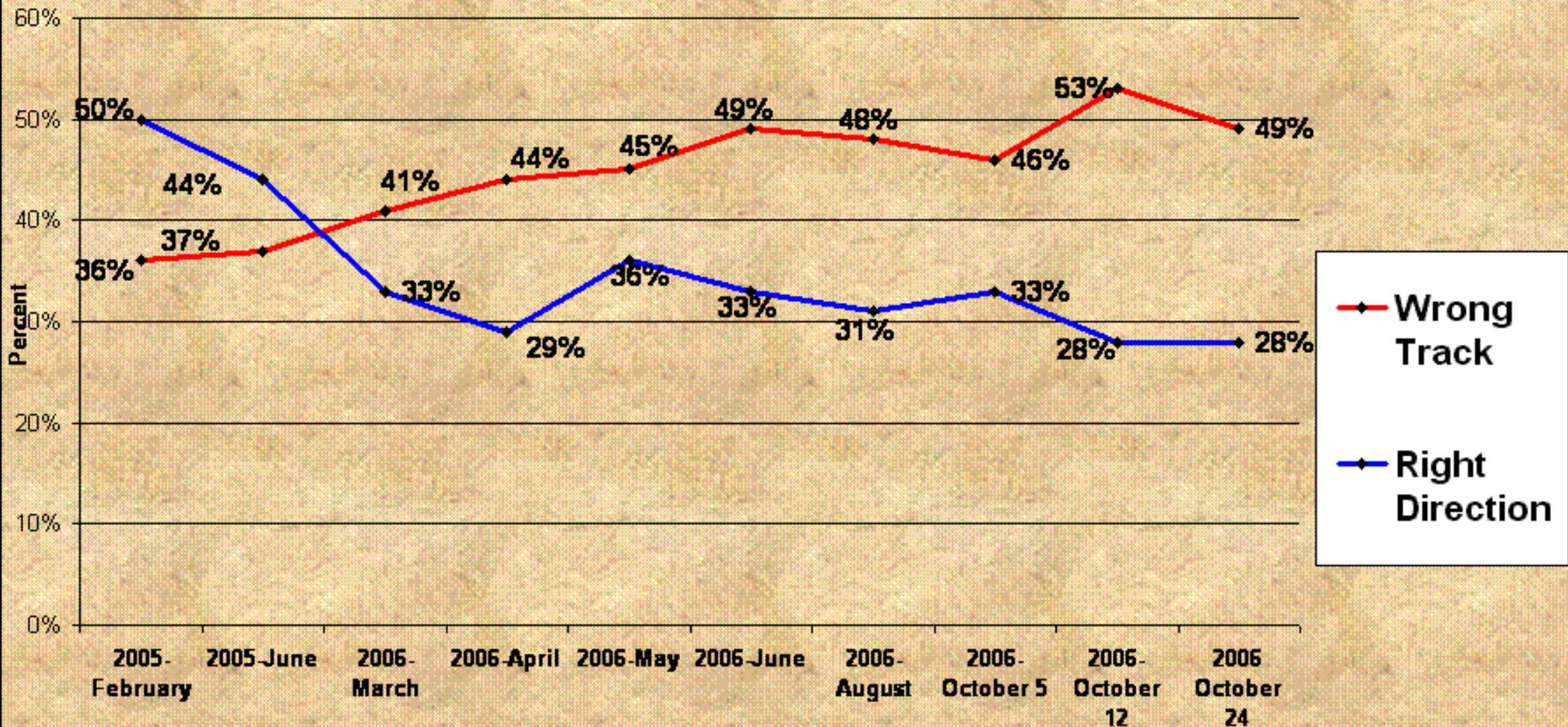
Suffolk University

# Ballot Test Governor

## Patrick Poised for a Landslide Victory



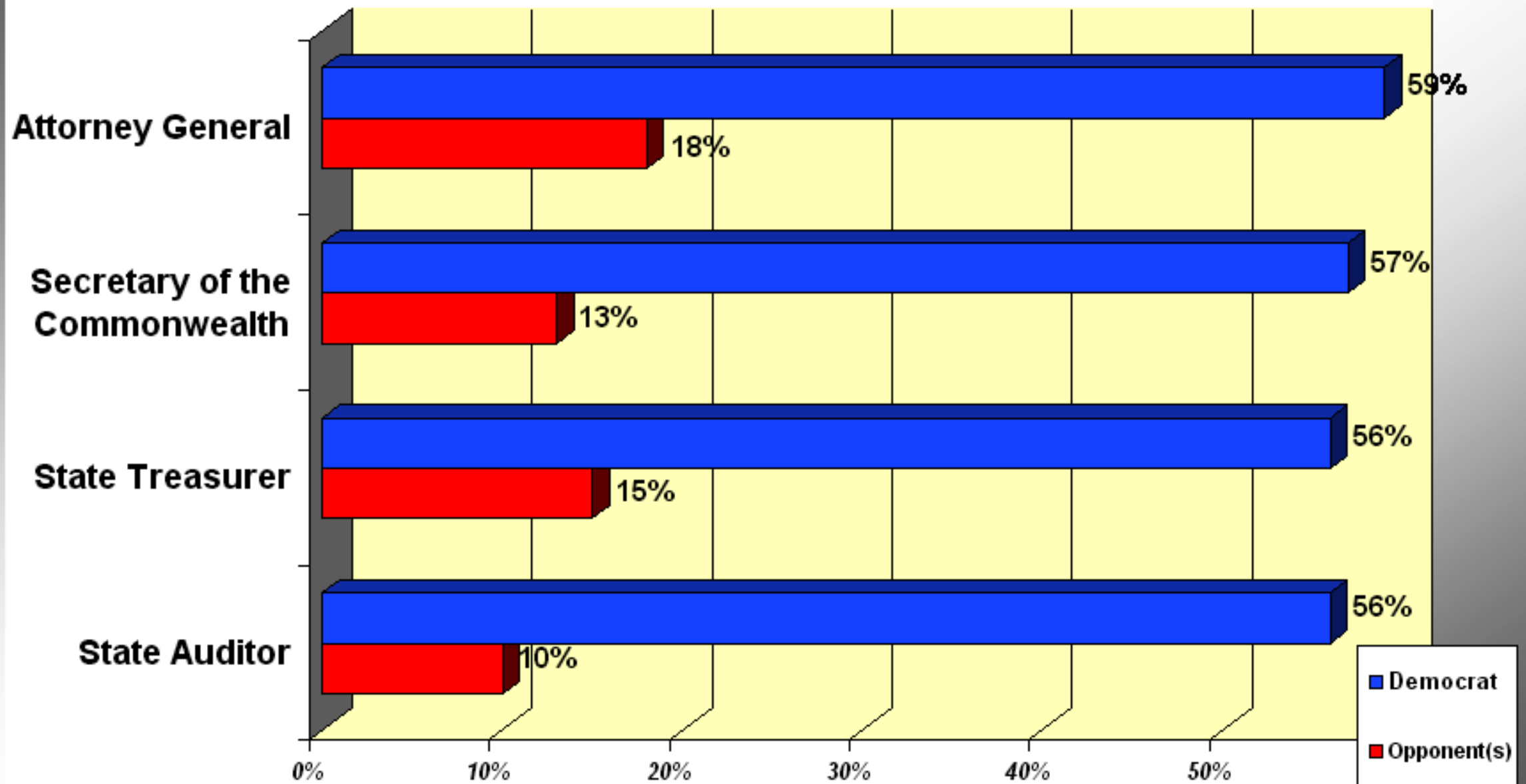
# Direction of the Commonwealth Wrong Track.



Suffolk University

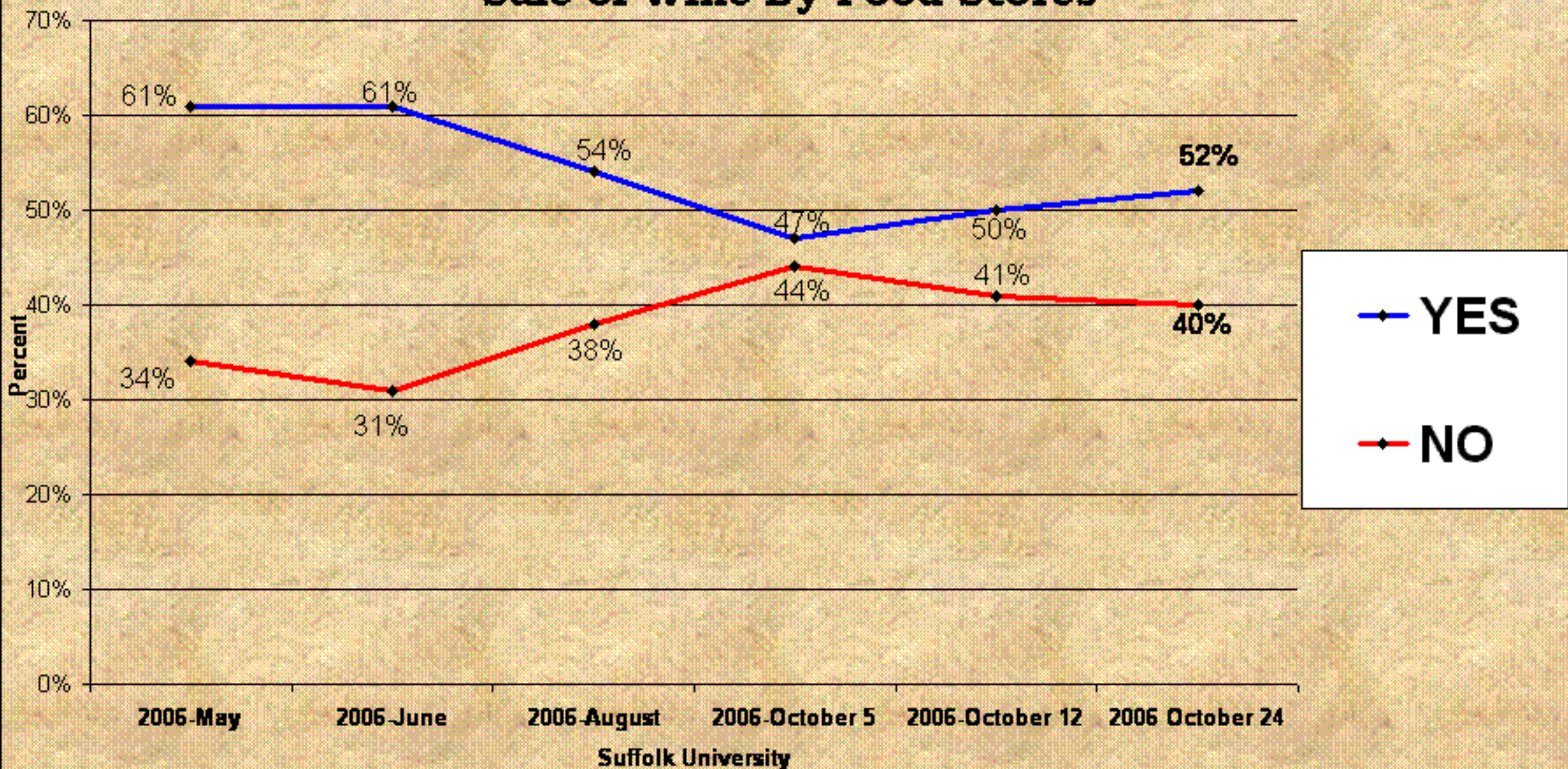
# Democratic Constitutional Officers

Coakley, Galvin, Cahill, & DeNucci With Large Early Leads Over Opponents



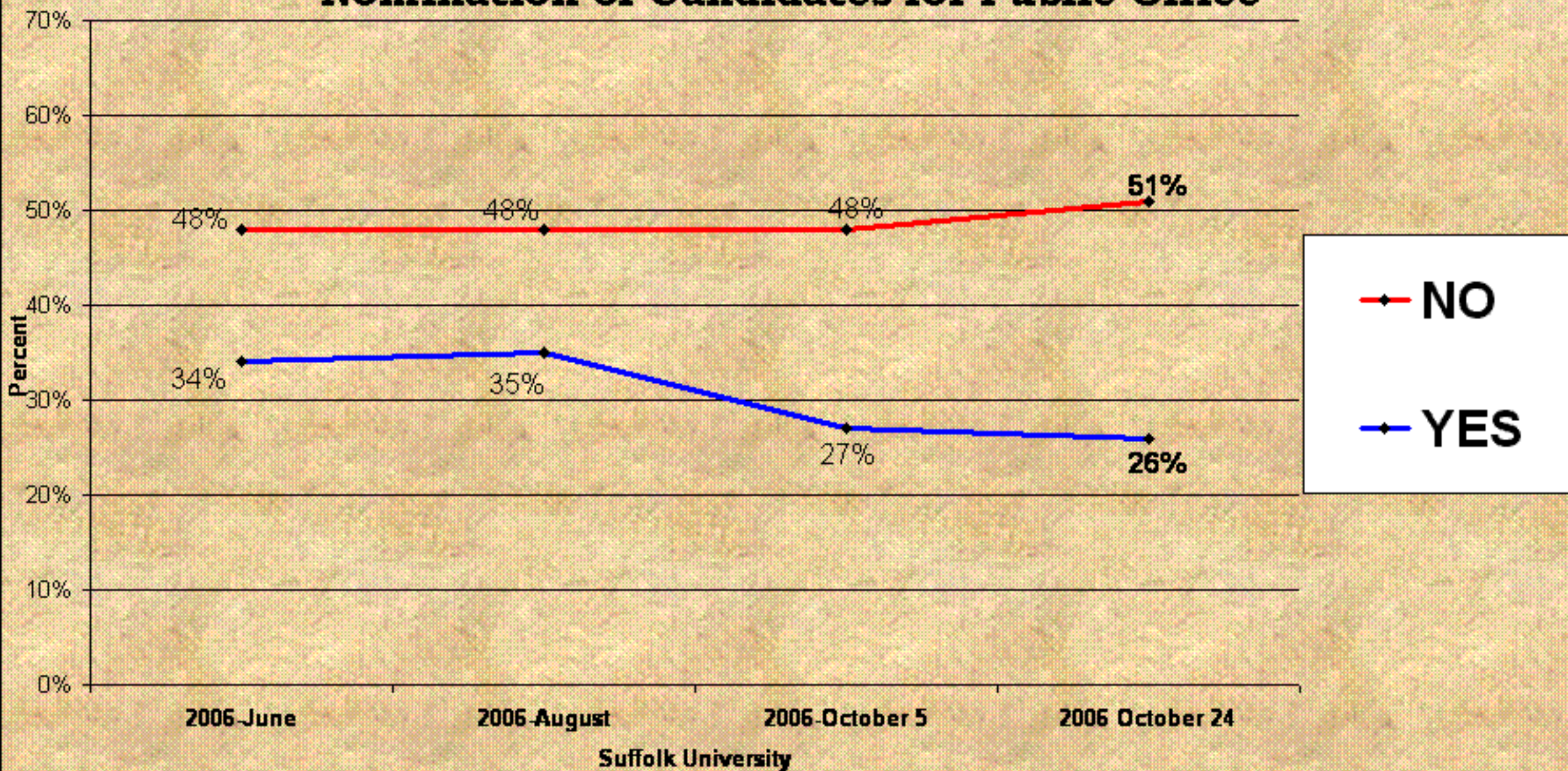
# Ballot Question #1

## Sale of Wine By Food Stores



# Ballot Question #2

## Nomination of Candidates for Public Office



# Ballot Question #3

## Family Child Care Providers

