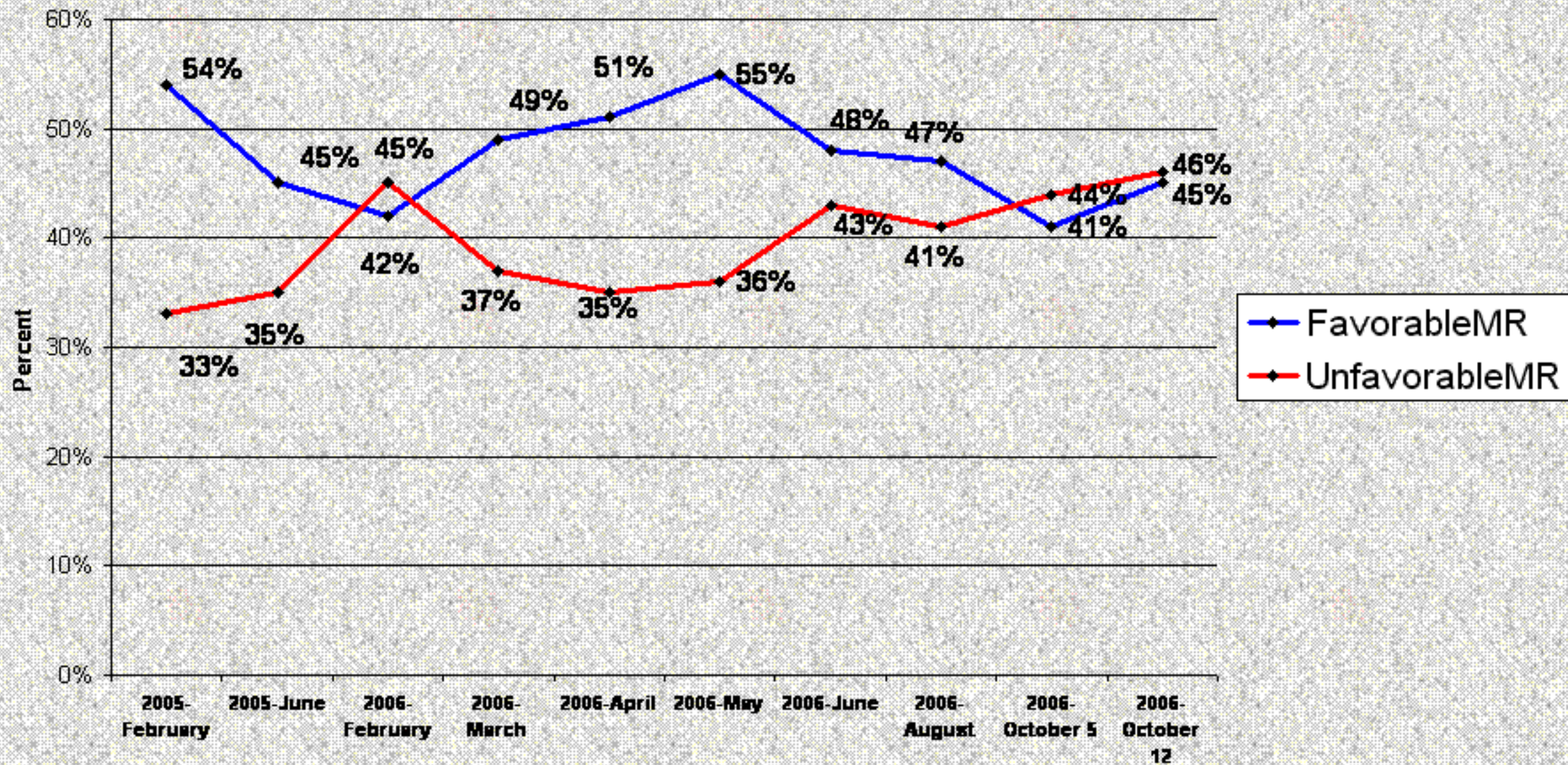
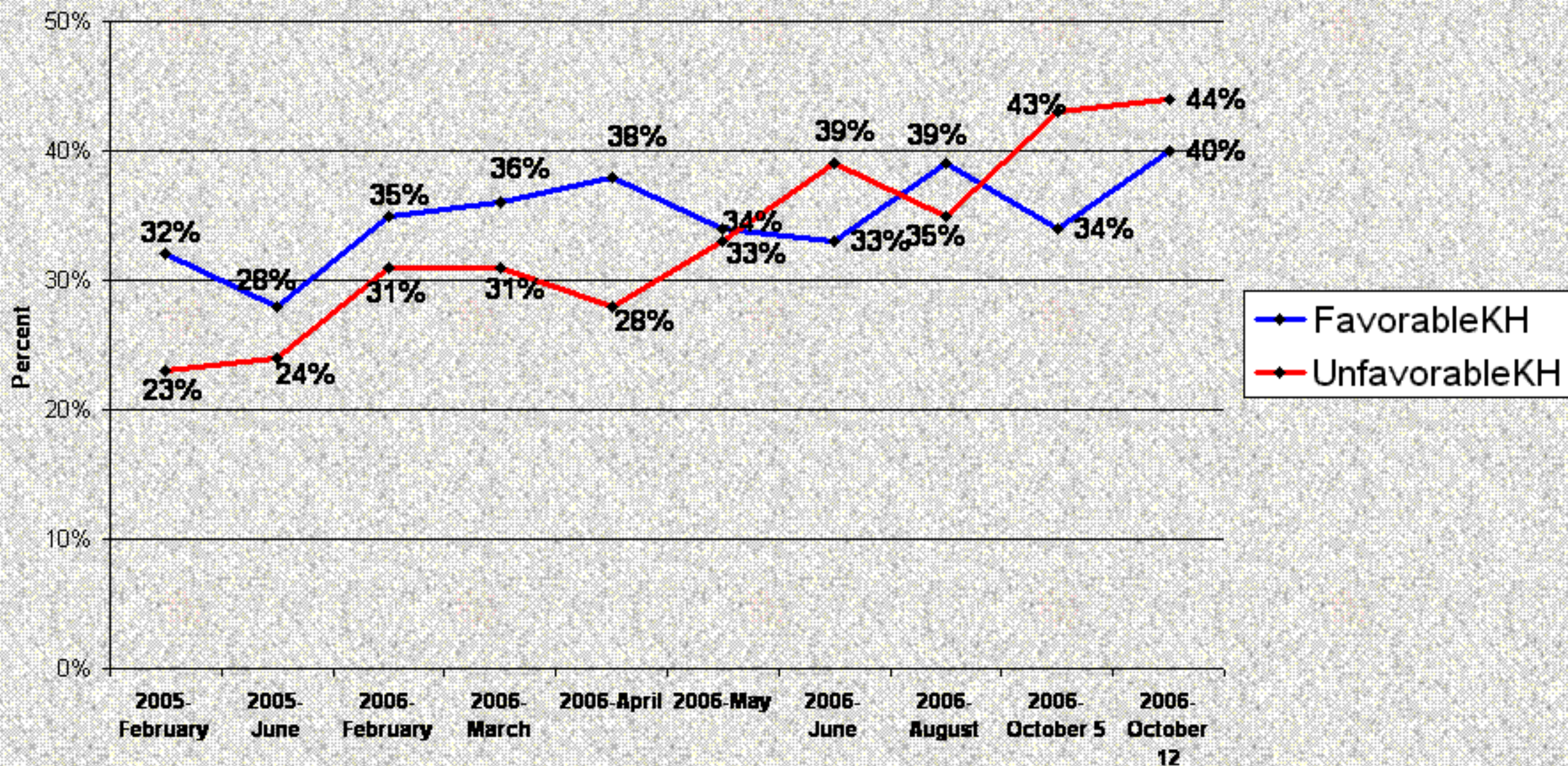


# Favorability Ratings of Governor Mitt Romney "Struggling Popularity"



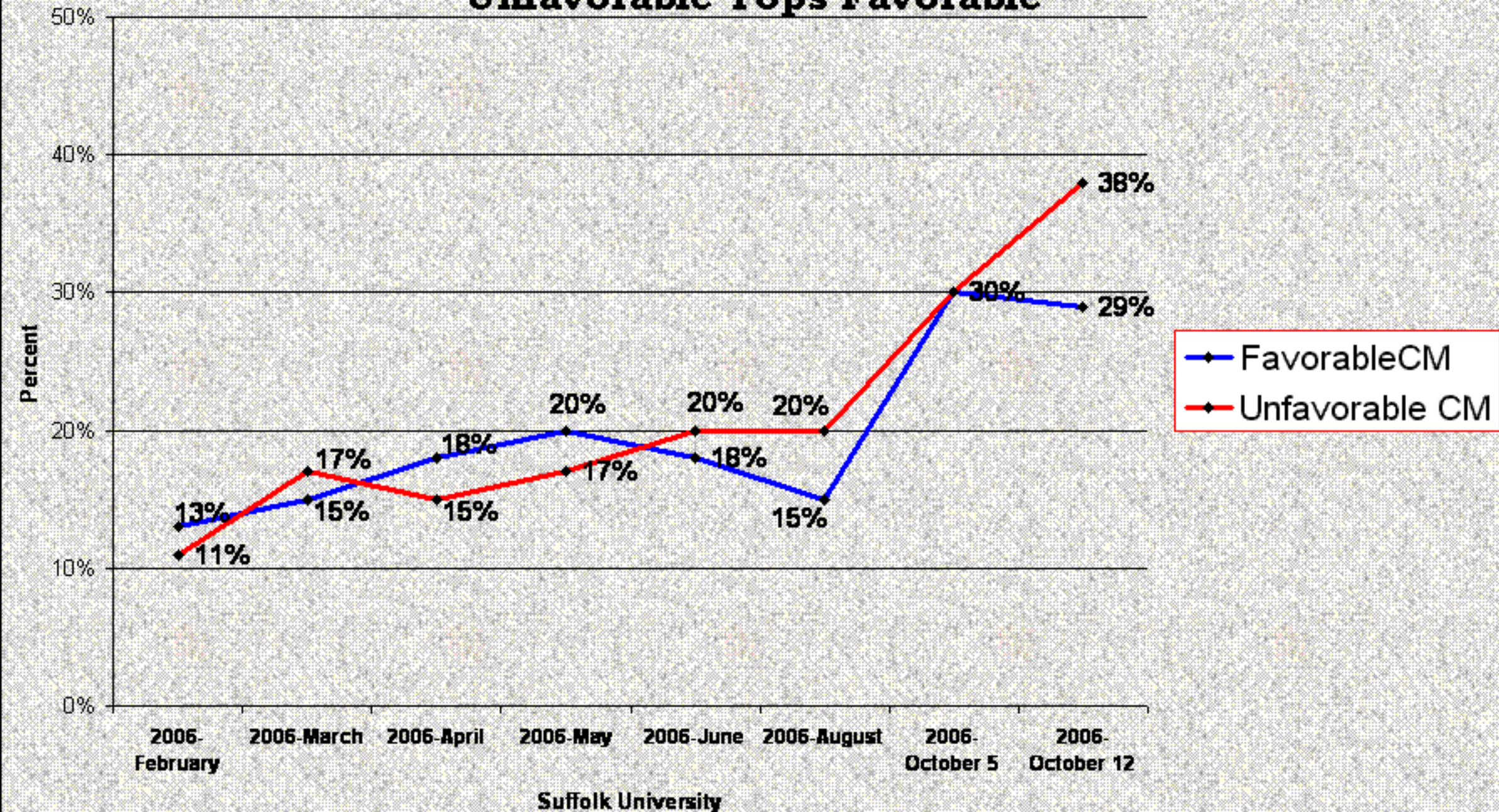
# Favorability Ratings of Republican Kerry Healey

## "Highest Negative To Date"



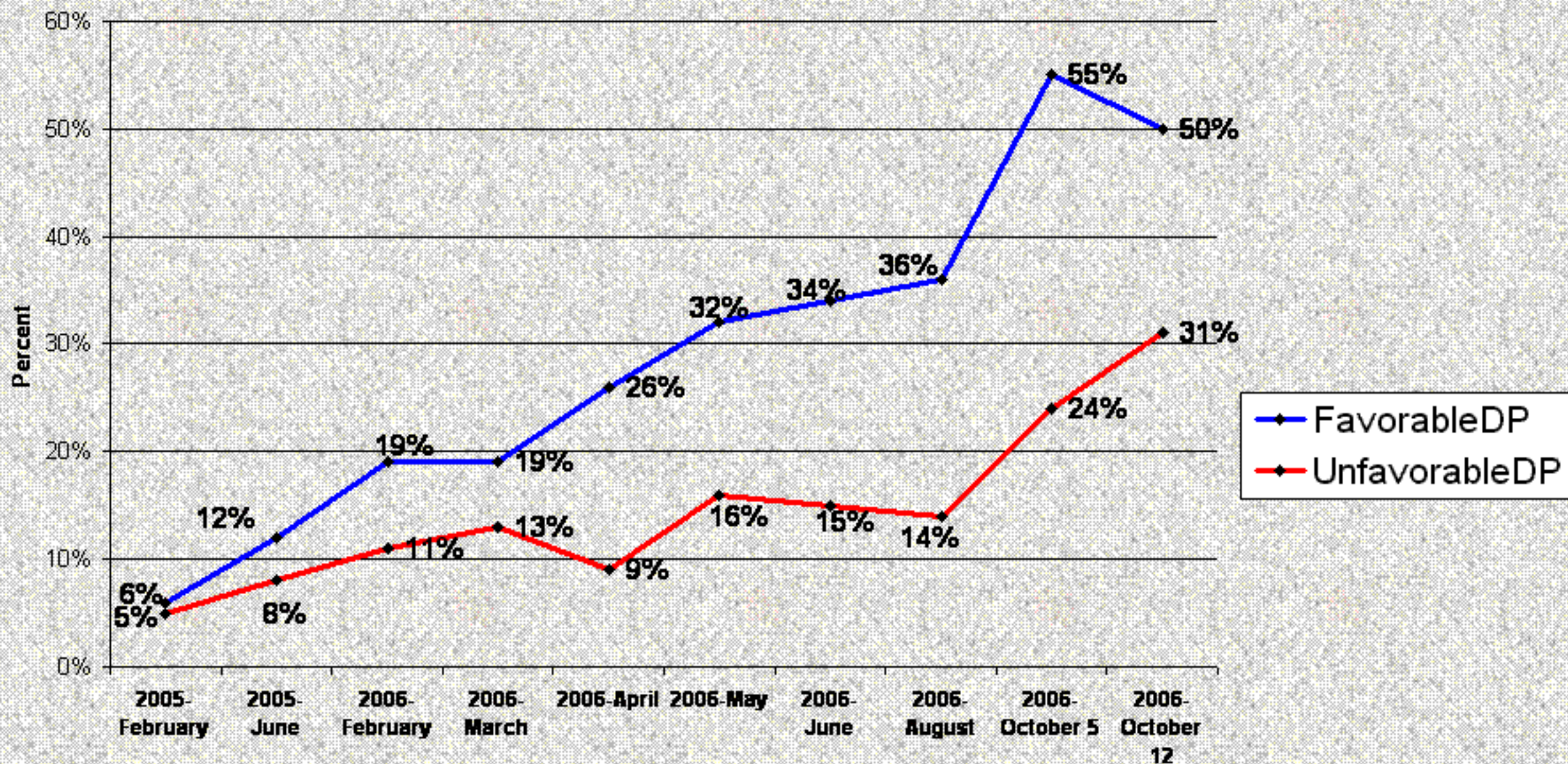
# Favorability Ratings of Independent Christy Mihos

## "Unfavorable Tops Favorable"



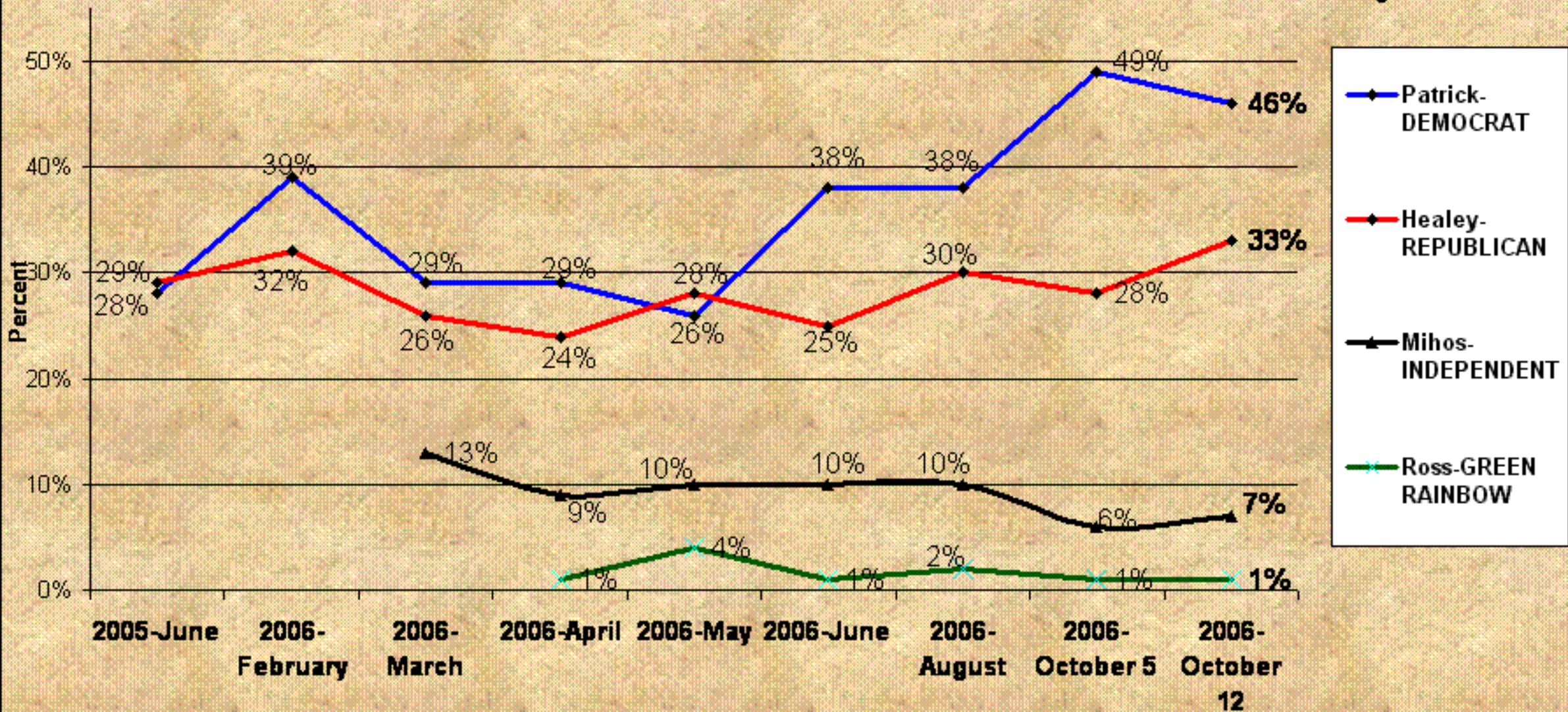
# Favorability Ratings of Democrat Deval Patrick

## "Soft on Crime Has Marginal Impact"



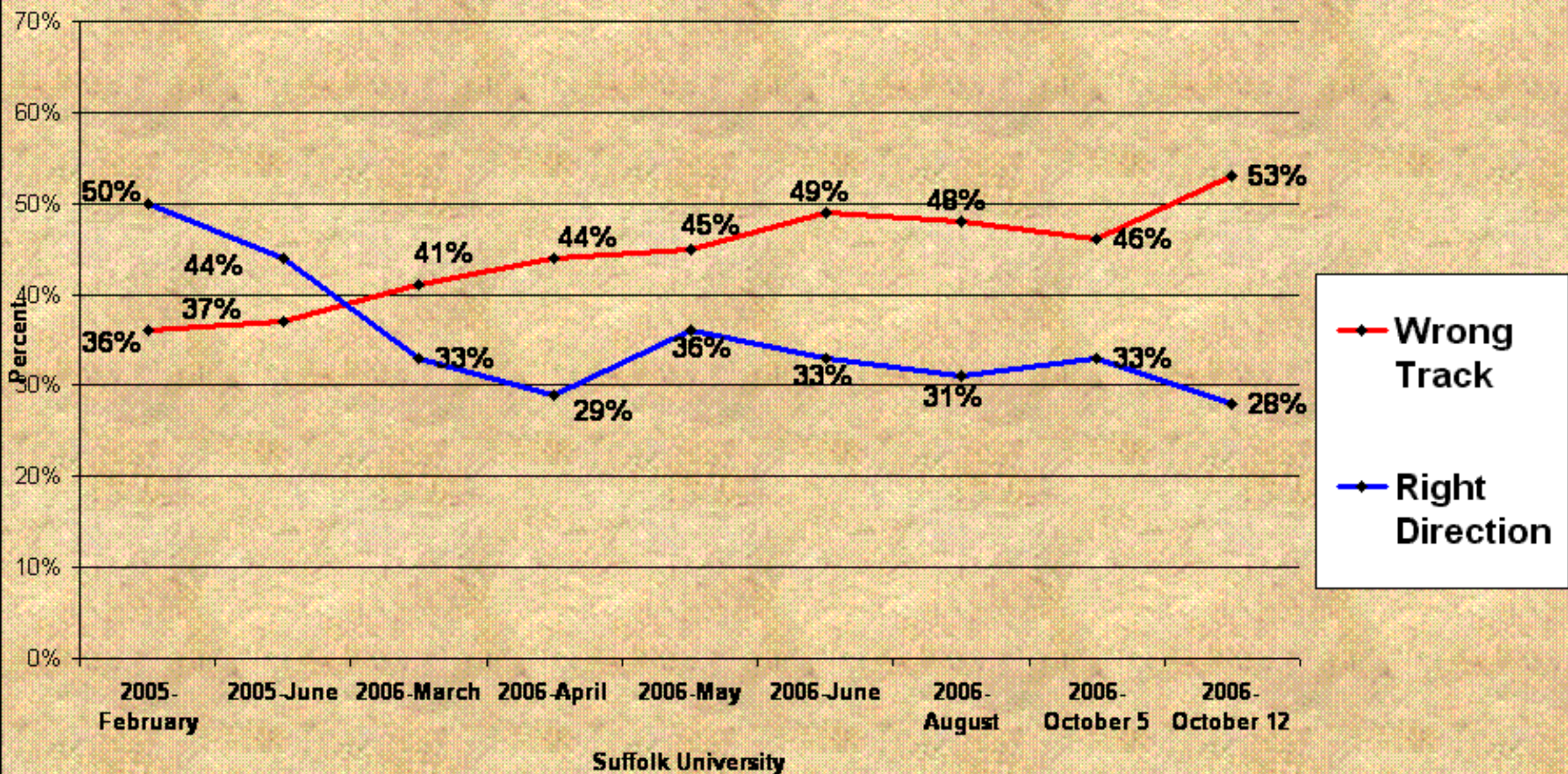
# Ballot Test Governor

## Patrick Withstands Attacks and Holds Lead Over Healey



Suffolk University

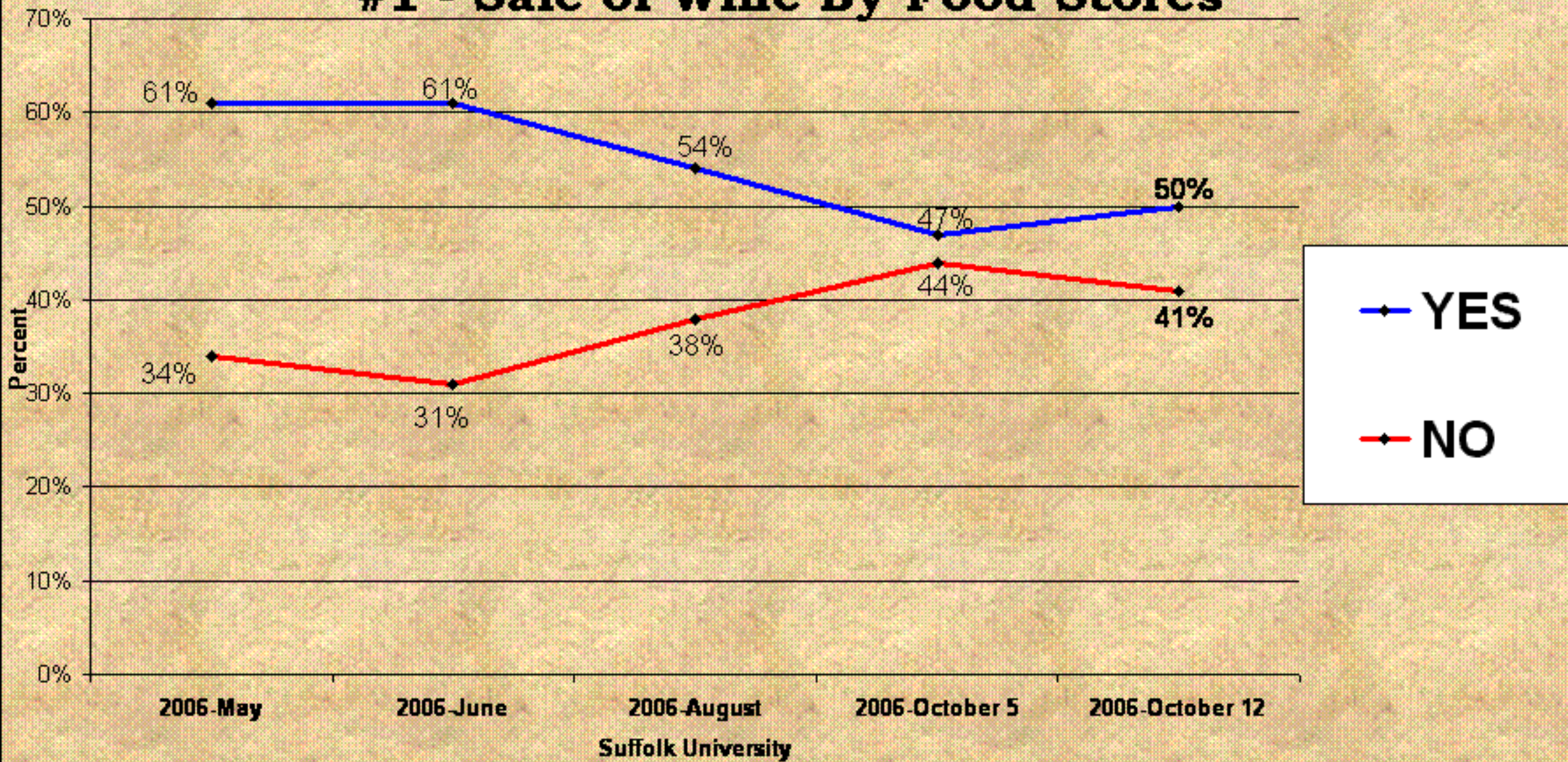
# Direction of the Commonwealth Wrong Track Trumps All Other Poll Stats.



Suffolk University

# Cork Kink.

## #1 - Sale of Wine By Food Stores



# "Is Deval Patrick Soft on Crime?"

## Laguer Effect - "Yes" Nearly Doubles in One Week

