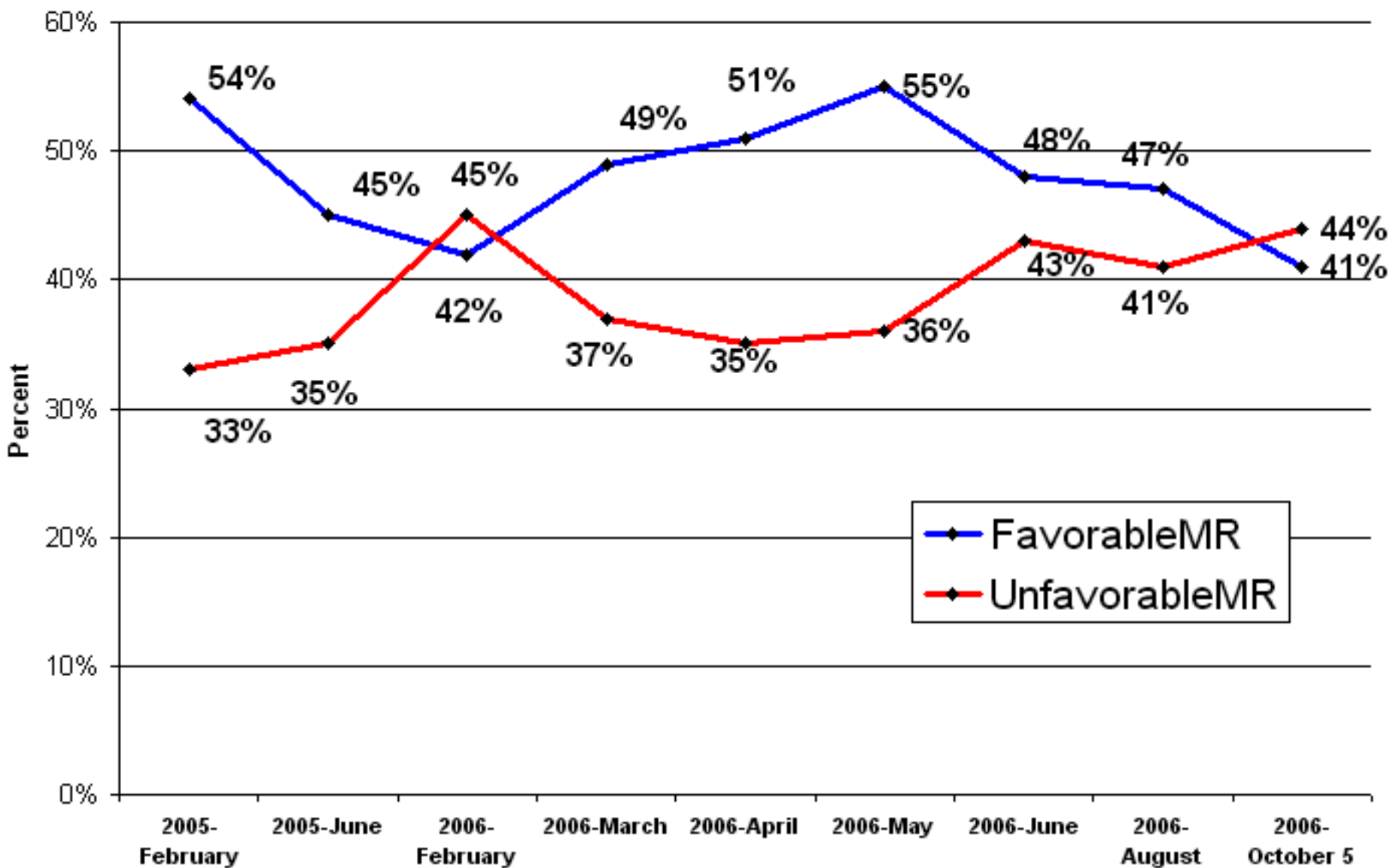
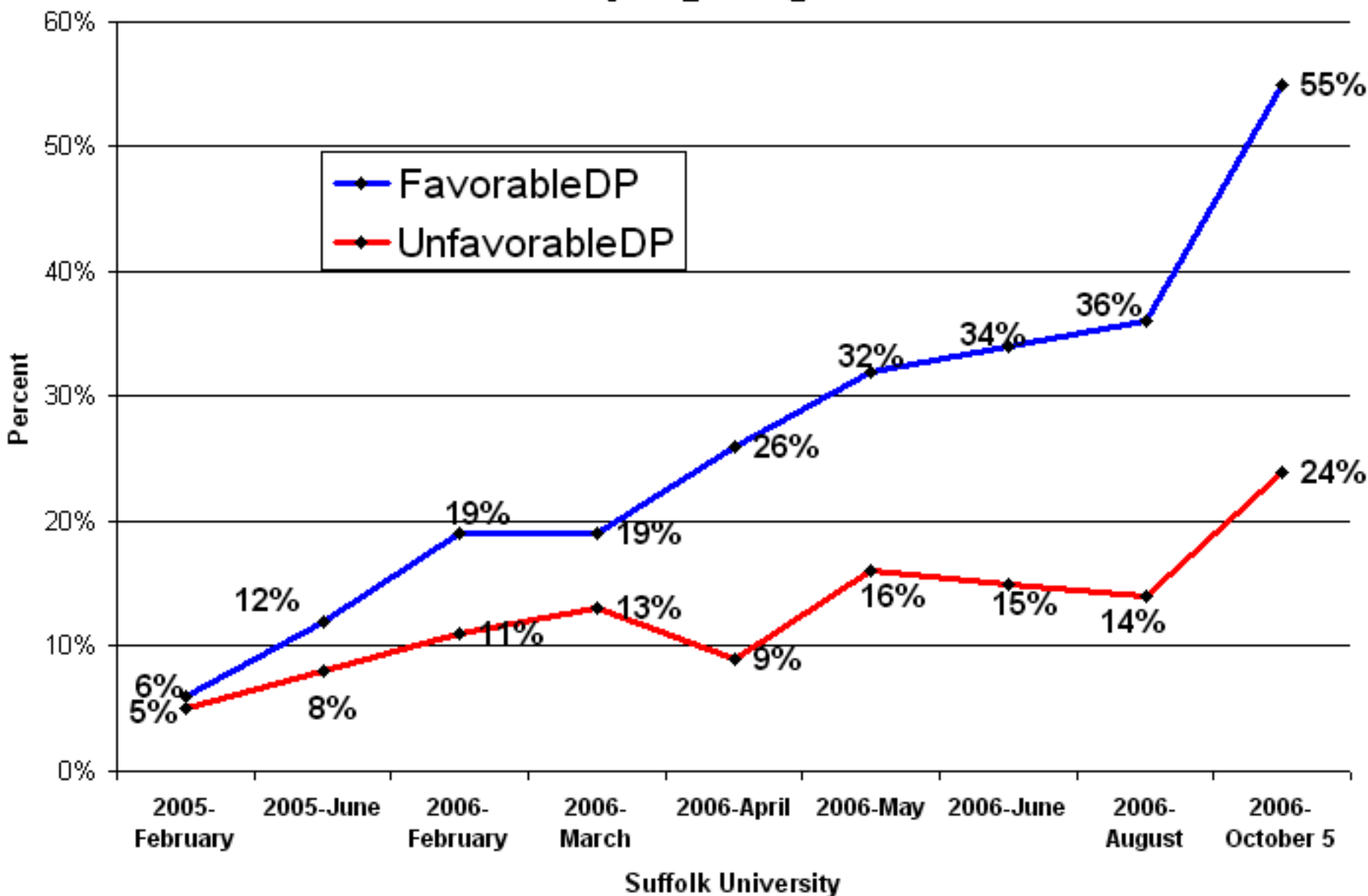


Favorability Ratings of Governor Mitt Romney "Negative Territory"

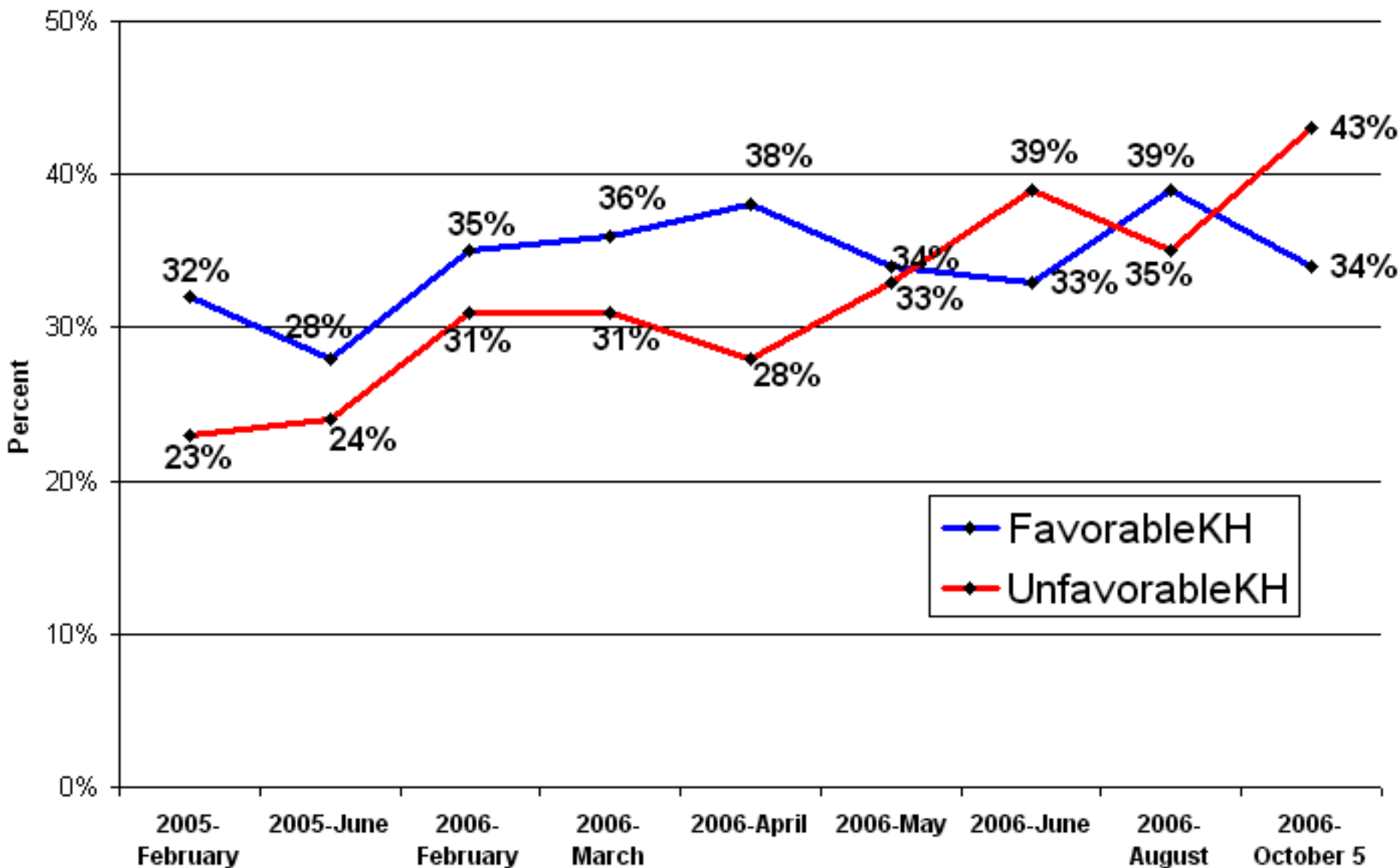


Favorability Ratings of Democrat Deval Patrick "Primary Springboard"



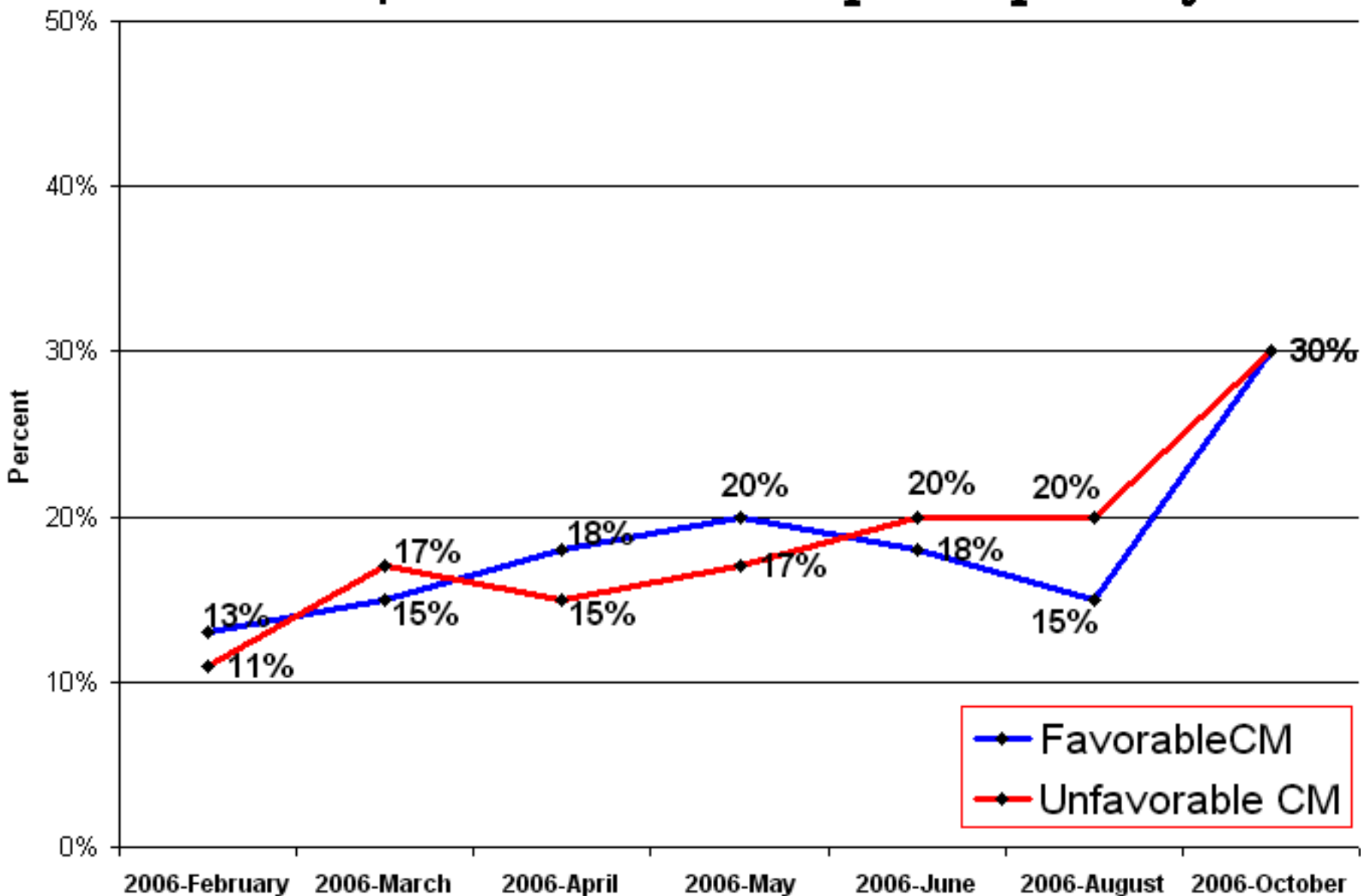
Favorability Ratings of Republican Kerry Healey

"Highest Negative on Record"



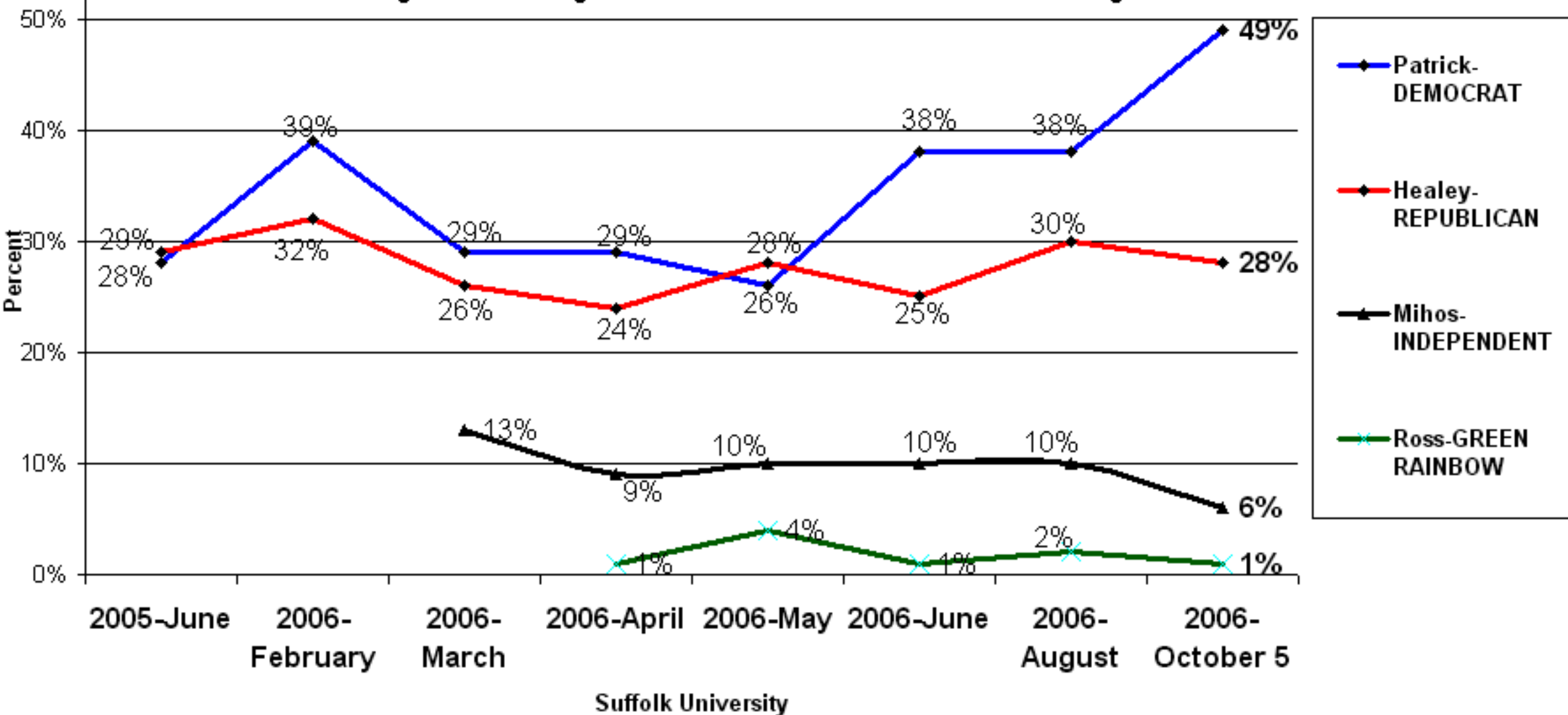
Favorability Ratings of Independent Christy Mihos

"TV Ads/Debates Record Split Popularity"



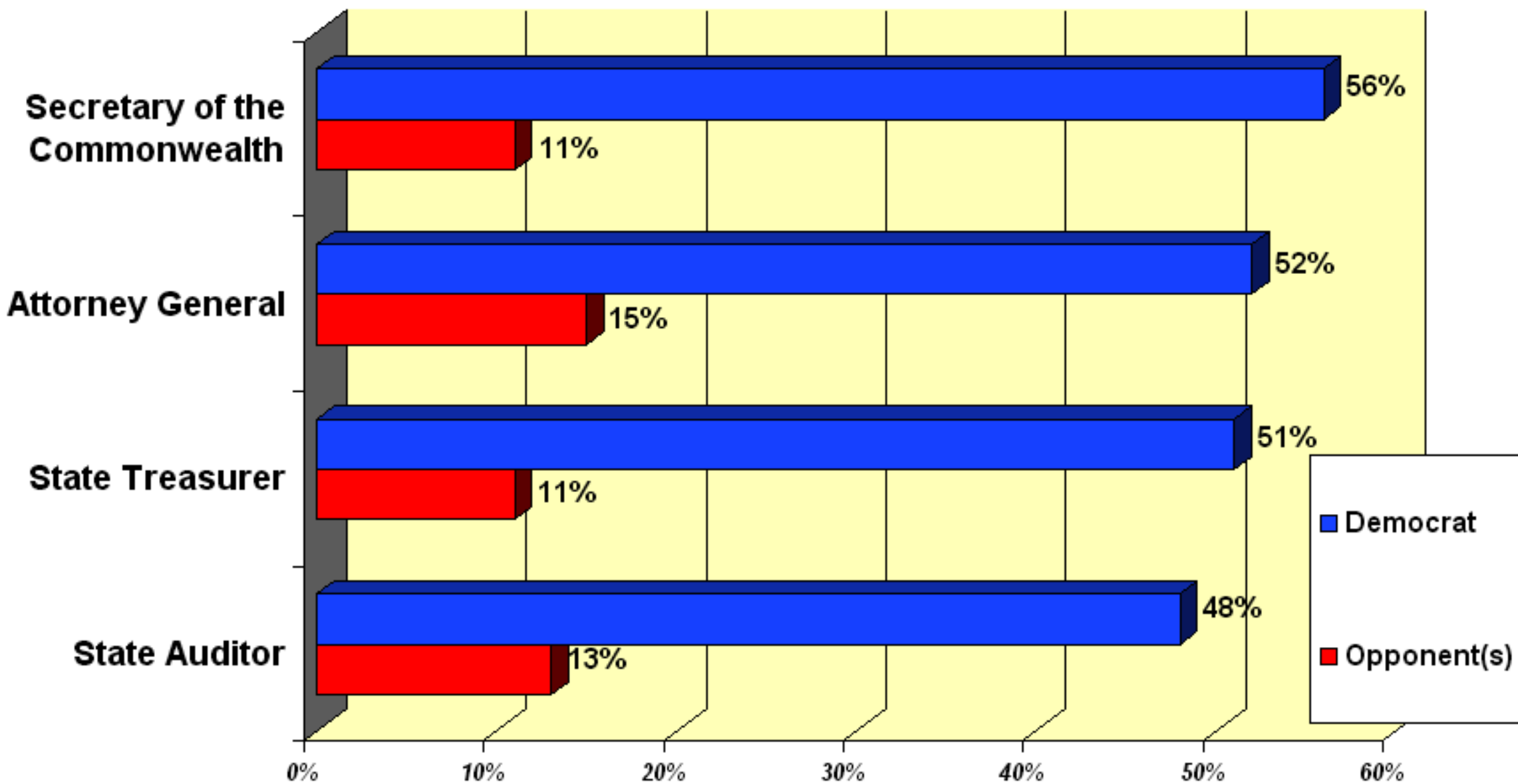
Ballot Test Governor

Patrick By Twenty-One Points Over Healey

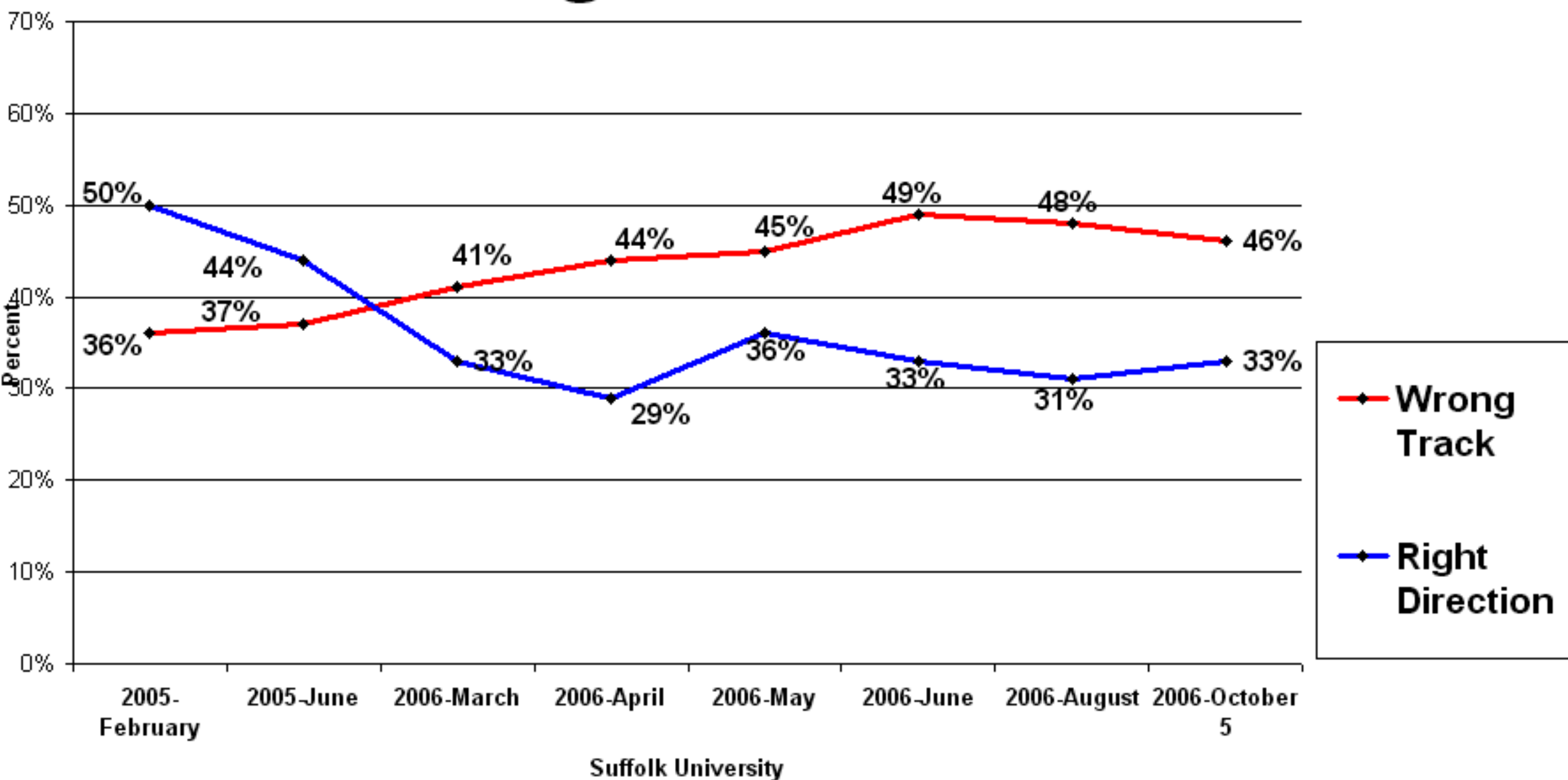


Democratic Constitutional Officers

Galvin, Coakley, Cahill, & DeNucci With Large Early Leads Over Opponents

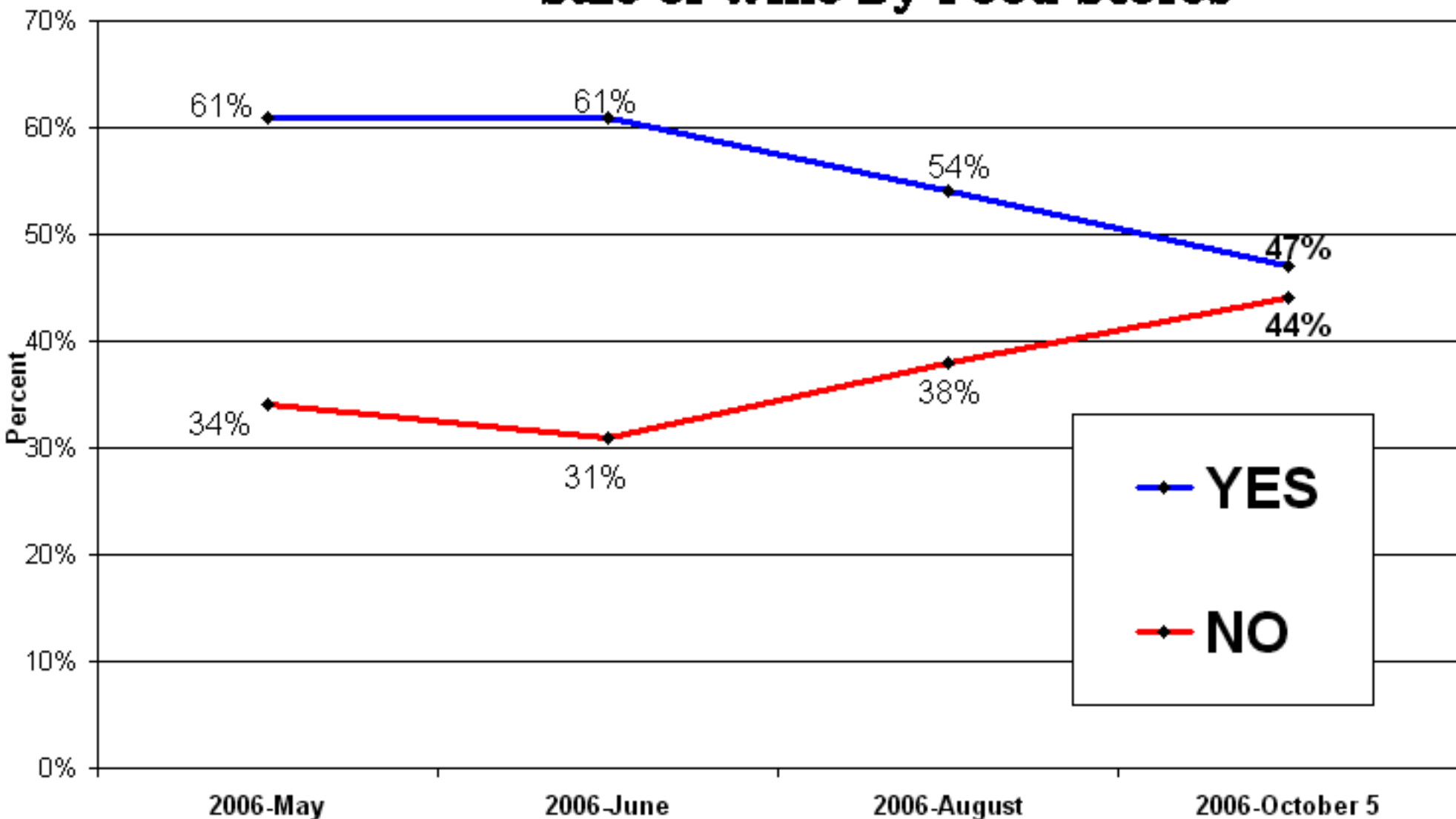


Direction of the Commonwealth Wrong Track.



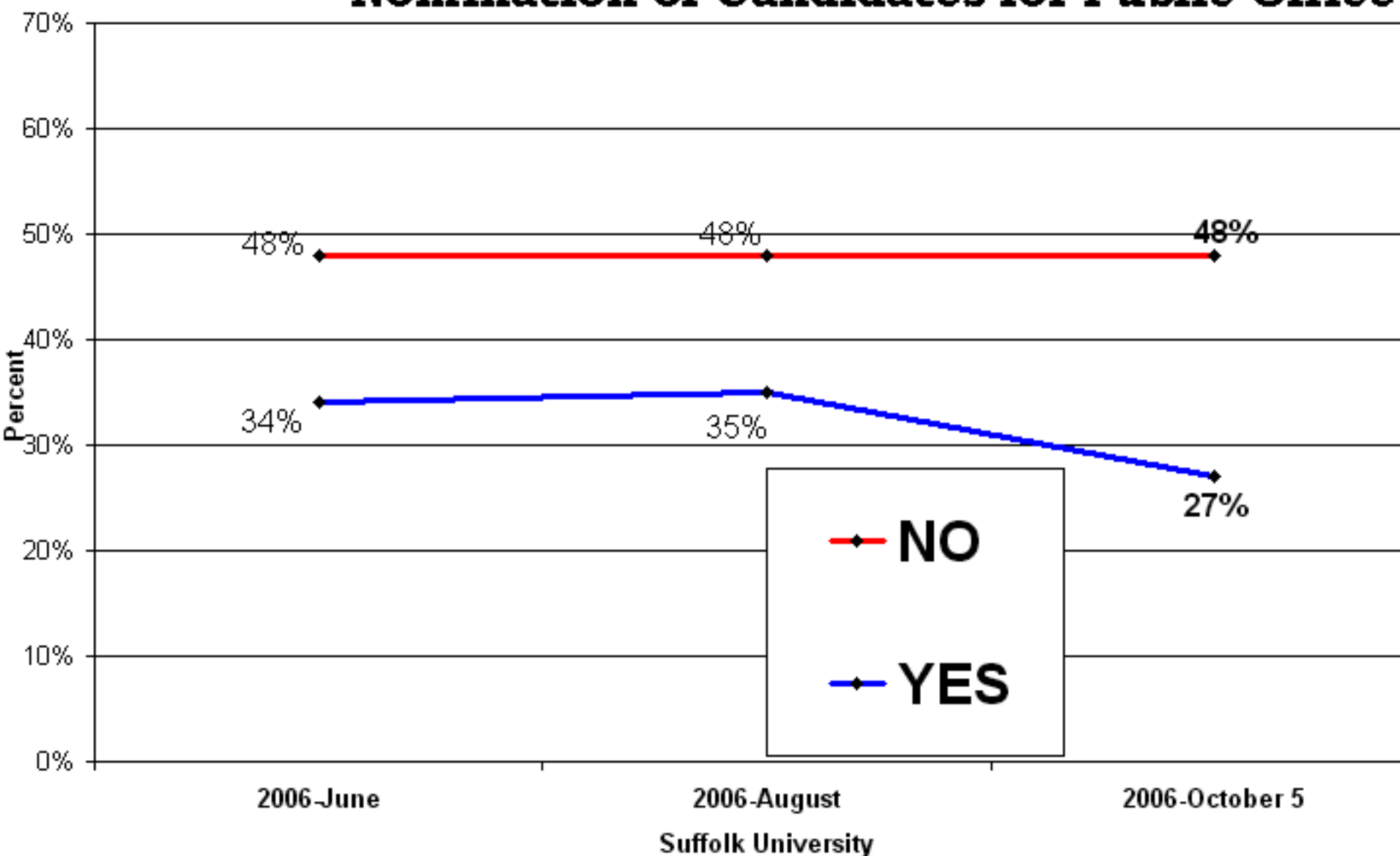
Ballot Question #1

Sale of Wine By Food Stores



Ballot Question #2

Nomination of Candidates for Public Office



Ballot Question #3

Family Child Care Providers

