

# ACCESS TO COURSES INFORMATION



Take the time to read the information below. It provides you step by step instruction on how to access:

- Campus Cruiser
- Blackboard
- Online Courses

---

## Login to Campus Cruiser

SUFFOLK HOME ABOUT SUFFOLK ACADEMICS ADMISSION & FINANCIAL AID CAMPUS LIFE & BOSTON RESEARCH CENTERS & INSTITUTES OFFICES & SERVICES ALUMNI

SUFFOLK UNIVERSITY BOSTON

ABOUT THE BUSINESS SCHOOL UNDERGRADUATE PROGRAMS GRADUATE PROGRAMS FACULTY BUSINESS SCHOOL ALUMNI CONTACT US

Home > Graduate Programs > View By Program > MBA Online

MBA ONLINE

**Suffolk MBA Online – Among the Best**

You're interested in career advancement and an MBA accredited by AACSB International that fits your busy schedule.

Recognized by *US News & World Report*, Suffolk MBA Online is the perfect solution for ambitious professionals on the go.

Find out more about our 5 [concentration areas](#)

REQUEST MORE INFORMATION

ATTEND AN INFO SESSION!

Thurs., Feb. 8, 2007  
Omni Parker House Hotel  
60 School Street  
Boston, MA  
6:00pm-7:30pm

Info Sessions are held throughout the year. For additional

Campus Calendar | News | Libraries & Archives | Athletics | Jobs | Contact Us | Campus Safety | OneSource  
Log In | Search

**Step 1:** Using your browser, navigate to the Suffolk MBA Online Program web page: <http://www.suffolk.edu/mbaonline>. Once at the site click on the **LOGIN** button at the bottom of the page.

SUFFOLK UNIVERSITY

SUFFOLK HOME ABOUT SUFFOLK ACADEMICS ADMISSION & FINANCIAL AID CA

Home > [Offices & Services](#) > Log In

LOG IN

Access to Campus Cruiser & Blackboard

[College of Arts & Sciences](#)

[Sawyer Business School](#)

[Suffolk Law School](#)

[Administration](#)

Log In

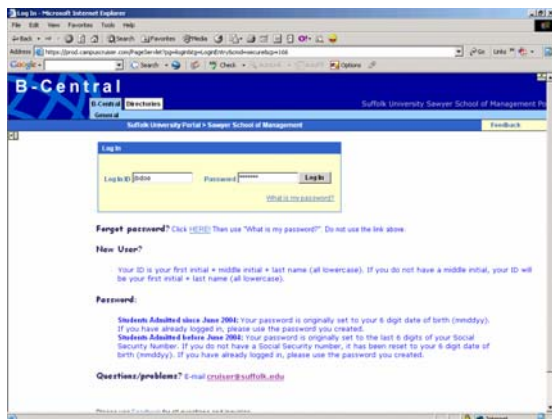
**Step 2:** This is the access page for B-Central (Campus Cruiser). Sawyer Business School students', click on the **"Sawyer Business School"**.

# ACCESS TO COURSES INFORMATION



**Step 3:** This is the Main Page for B-Central (Campus Cruiser).

Click on the **LOGIN** button to access Blackboard.



**Step 4:**

## New User?

Your ID is your first initial + middle initial + last name (all lowercase). If you do not have a middle initial, your ID will be your first initial + last name (all lowercase).

## Password:

Students Admitted since June 2004: Your password is originally set to your 6 digit date of birth (mmddyy). If you have already logged in, please use the password you created.

**Students Admitted before June 2004:** Your password is originally set to the last 6 digits of your Social Security Number. If you do not have a Social Security number, it has been reset to your 6 digit date of birth (mmddyy). If you have already logged in, please use the password you created.

**Login problems? Contact Campus Cruiser Help Desk at [cruiser@suffolk.edu](mailto:cruiser@suffolk.edu)**

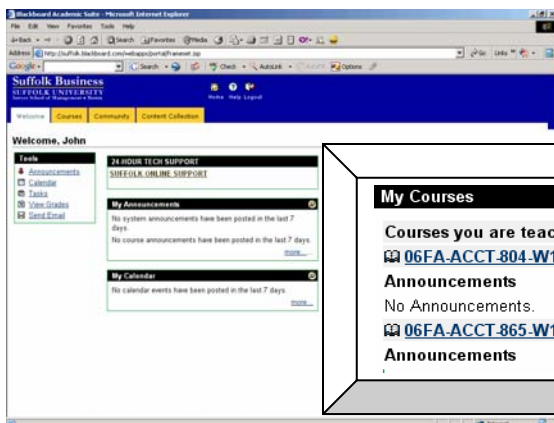
# ACCESS TO COURSES INFORMATION

## Blackboard



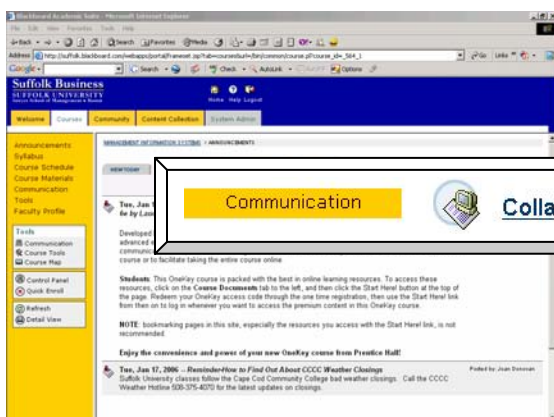
Once you have successfully logged on,

**Step 5:** Click the “**Blackboard**” tab at the top of the screen. This is the third tab from the left. You will now be taken directly to Blackboard. **NOTE: ALL POP-UP BLOCKERS MUST BE DISABLED!!!!**



**Step 6:** This is your Blackboard dashboard. Notice that your courses are listed in the “**My Courses**” box at the top right of the screen. Click the name of your course to access it.

Note: Online Courses are available on the first day of the semester. Therefore, you might not see your current registered course(s) under “My Courses” box.



**Step 7:** This is the main page of your Blackboard course. Follow the navigation links on the left to view course materials and use communication tools.

To access chat:  
Click on **Communication** >  
**Collaboration** > **Virtual Classroom**

**Note: you will need to install JAVA-Plug ins. Follow the instructions on the chat screen.**