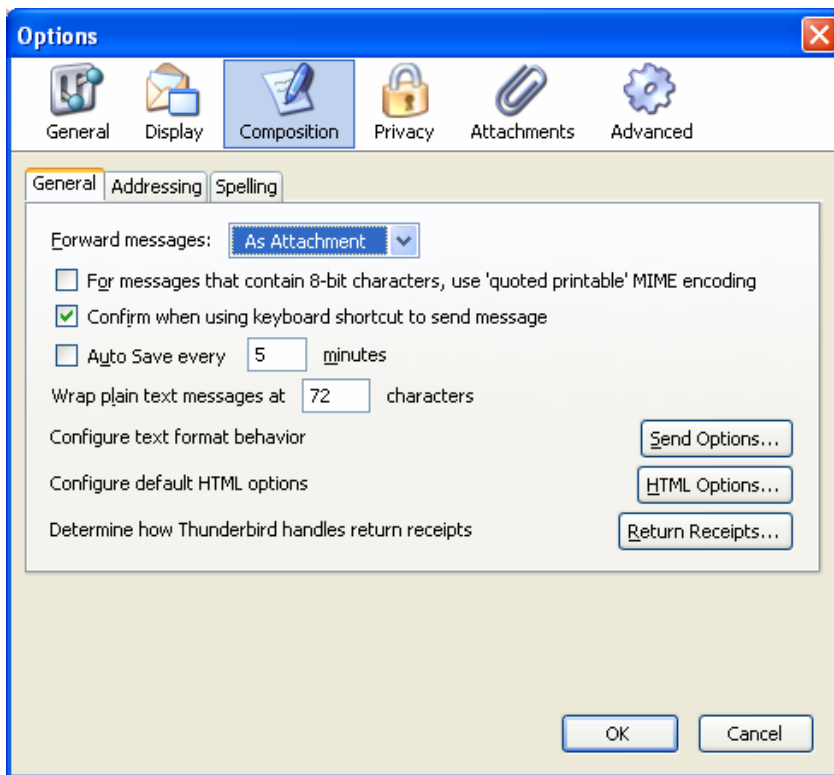
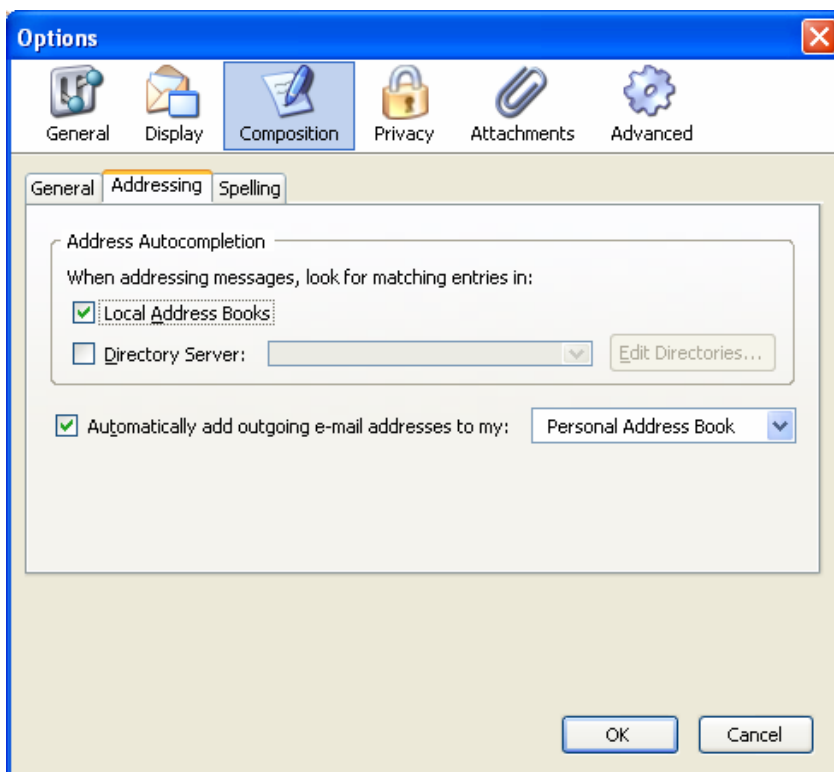


Configuring LDAP Directory for Thunderbird

- Open the Thunderbird Application and **Click** on **Tools** and then **Select Options** from the list available.



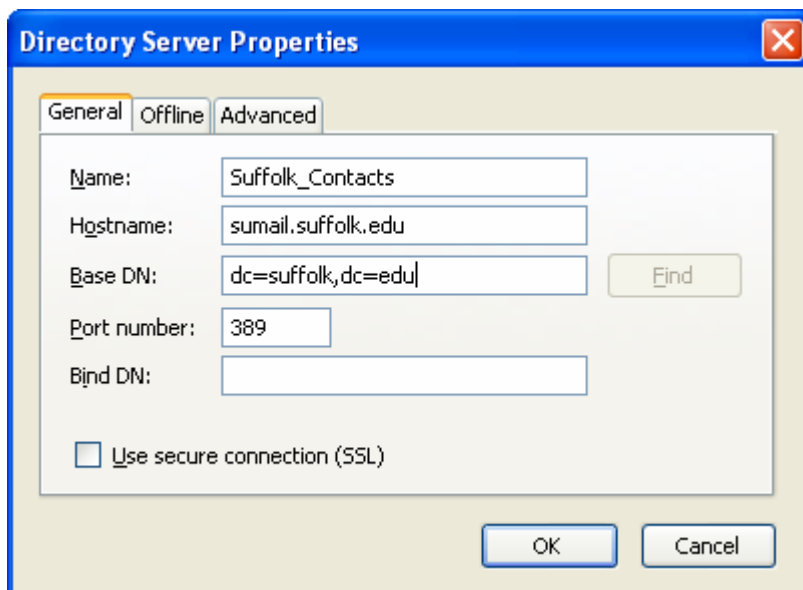
- Once there **Click** on the **Addressing Tab**.



- Now you will want to place a **Checkmark** in the Box next to **Directory Server:** and **Click** on **Edit Directories.**
- You will be presented with a new window were you will want to **Click** on **Add**



- A new window will open where you will need to provide the following information:
 - **Name:** Suffolk Contacts
 - **Hostname:** sumail.suffolk.edu
 - **Base DN:** dc=suffolk,dc=edu
 - **Port:** 389
 - **Bind DN:** (Should be empty)
- Compare with image below.



- Click on **Ok**, **Ok**, and **Ok** again to exit the **Options** windows.