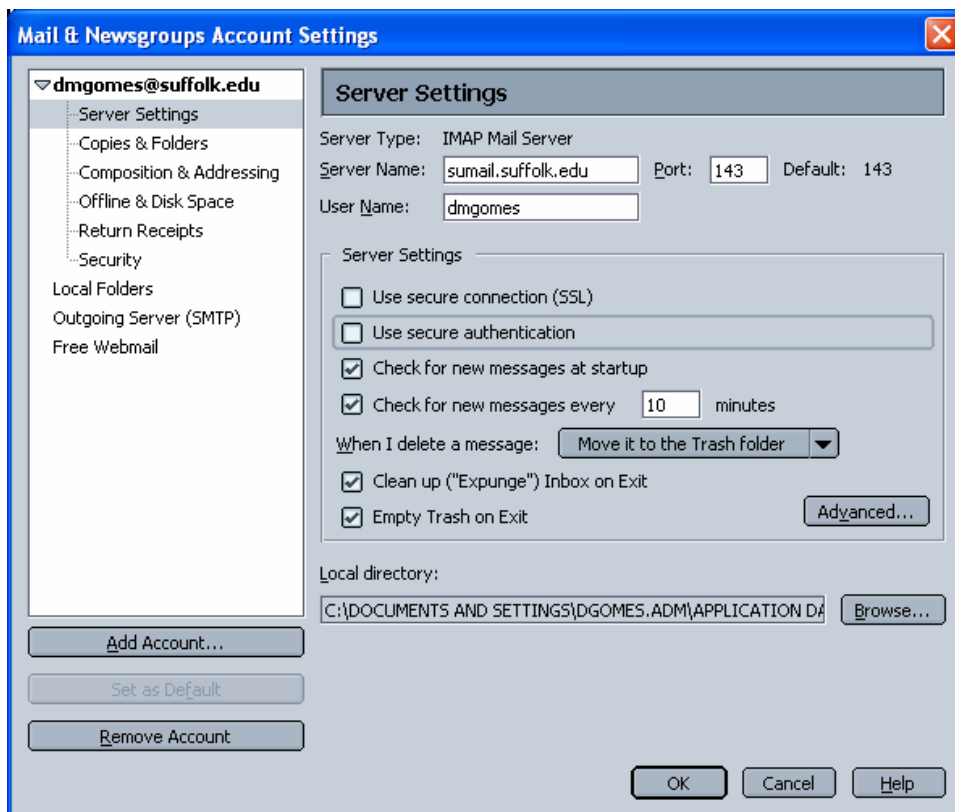


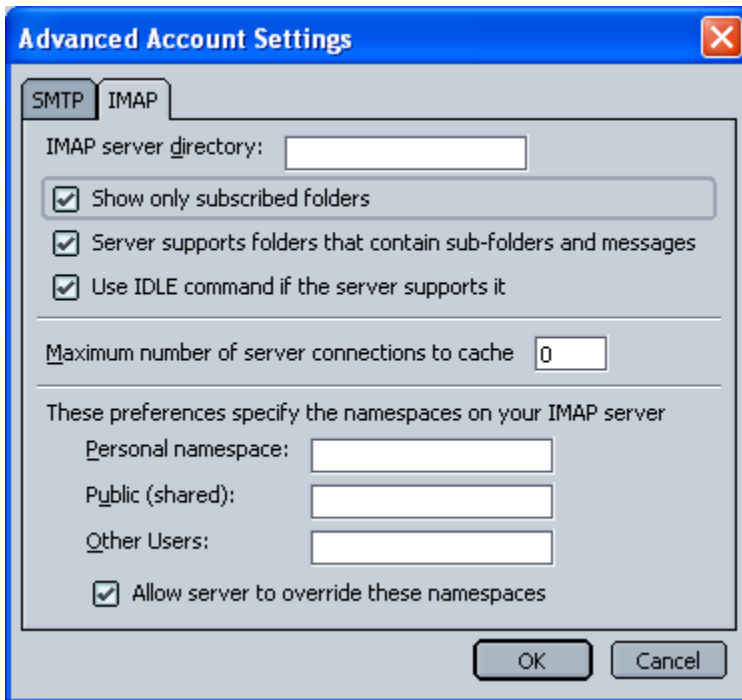
## Reconfiguring Netscape 7.2 to Access sumail.suffolk.edu

If you have set up your e-mail account prior to the migration, you will need to reconfigure Netscape Mail to access your e-mail on sumail.suffolk.edu:

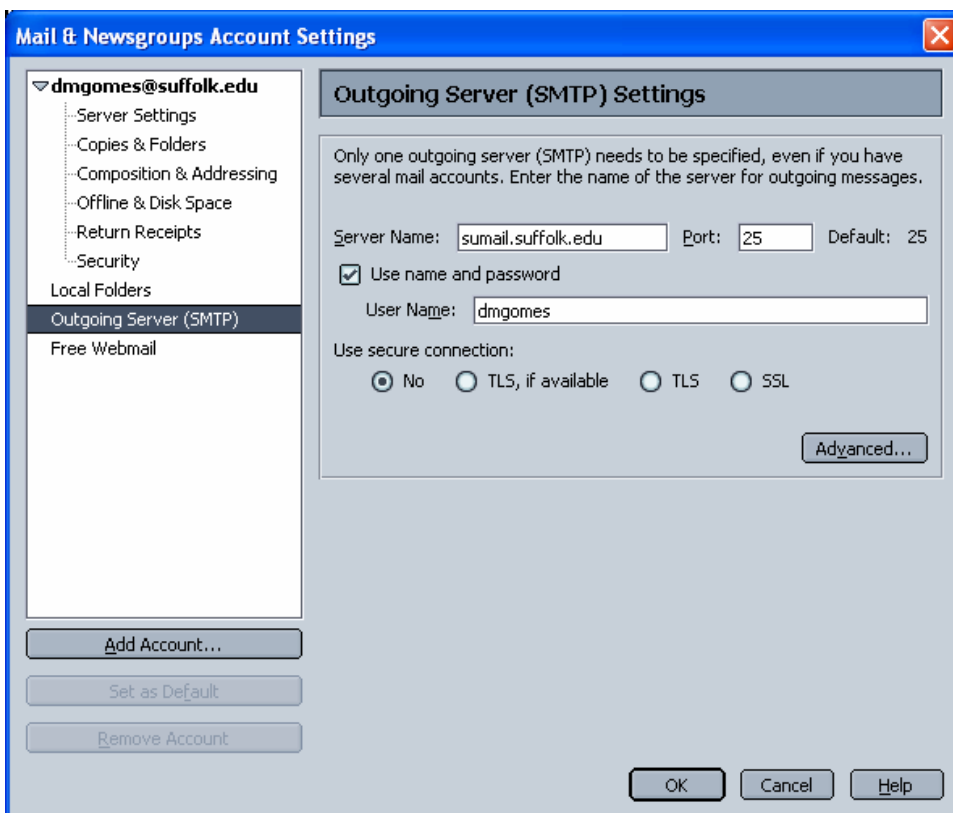
- **Double-click** on the **Netscape** icon. Netscape will start.
- From the **Window** menu, select **Mail & Newsgroups**.
- In the Netscape Mail window, click on the **Edit** menu and select **Mail & Newsgroups Account Settings....**
- **Select Server Settings** from the list of options on the left.
- **Change the Server Name: to sumail.suffolk.edu** (As Shown Below).



- Next you will need to **Click** on **Advanced**.
- **Delete** the **mail/** from the **IMAP Server Directory** and **Click** on **Ok** (SEE BELOW).



- **Now Select Outgoing Server (SMTP)** from the list of options on the left.
- **Change the Server Name: to sumail.suffolk.edu.**
- Verify that a **checkmark is in the box next to Use Name and Password** and that the **User Name:** is your login ID. (As Shown Below).



- **Click on OK** to close any open windows.
- **Close and restart** the Netscape Application.