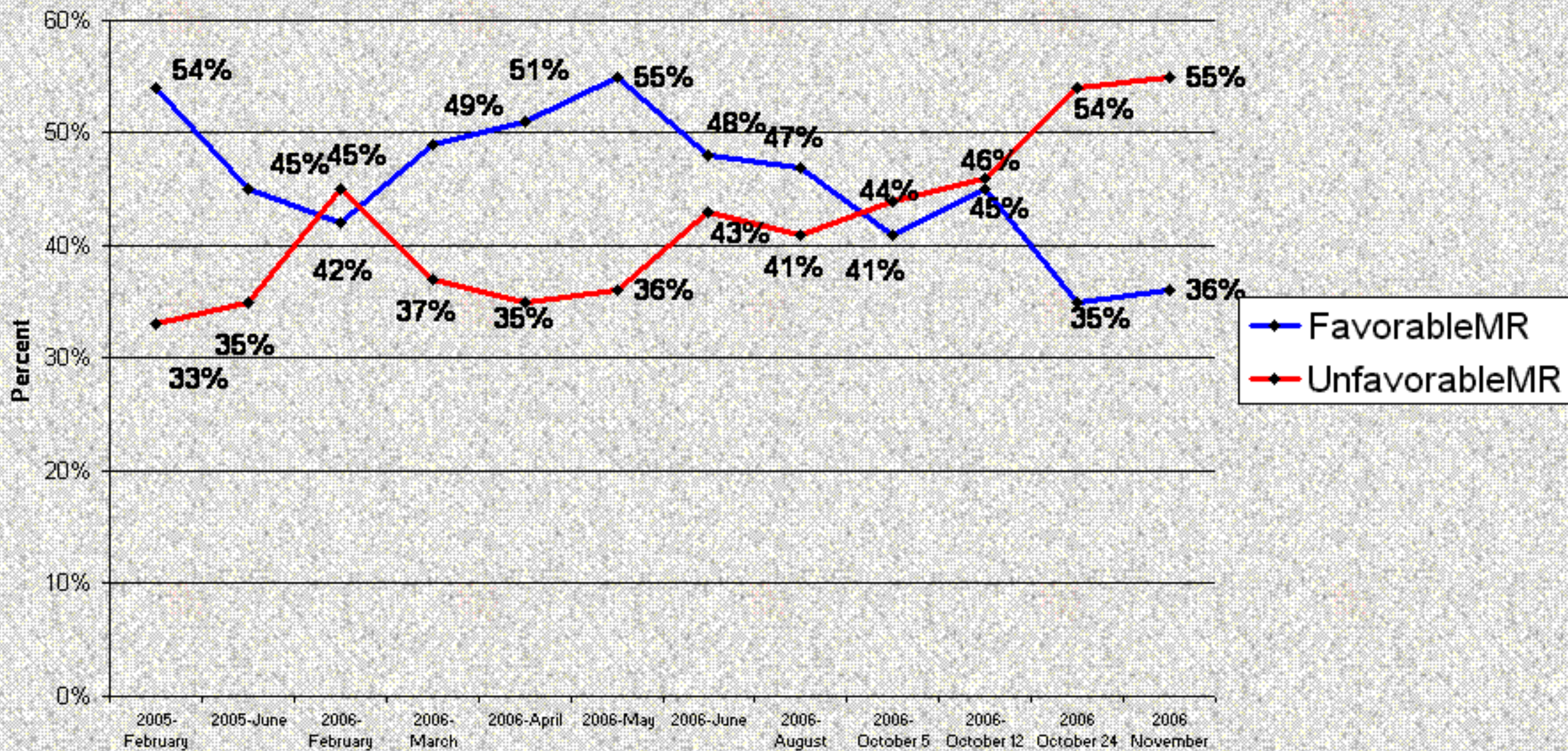


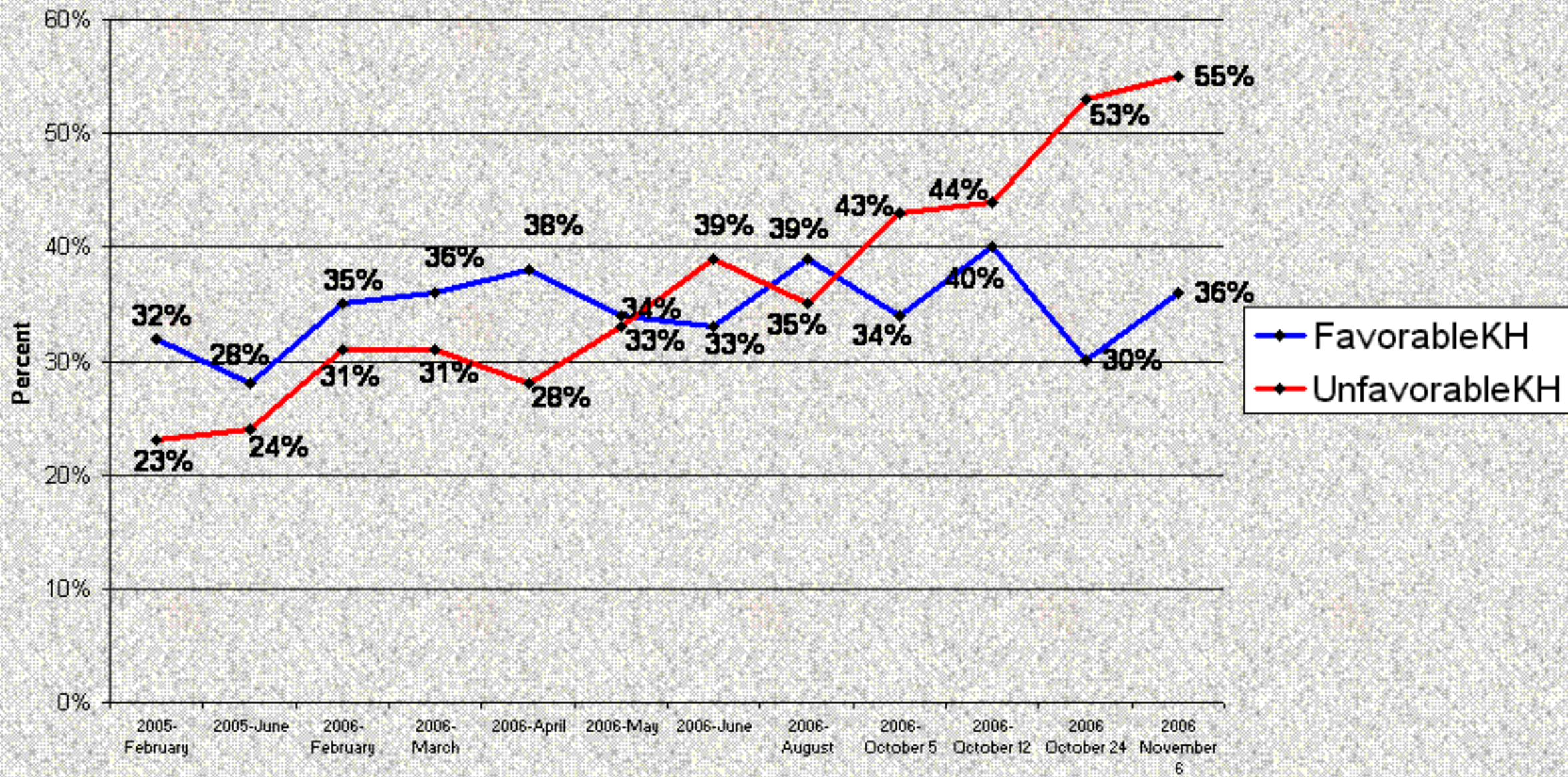
Favorability Ratings of Governor Mitt Romney

"Higher Negative Than Positive in 4 Consecutive Polls"

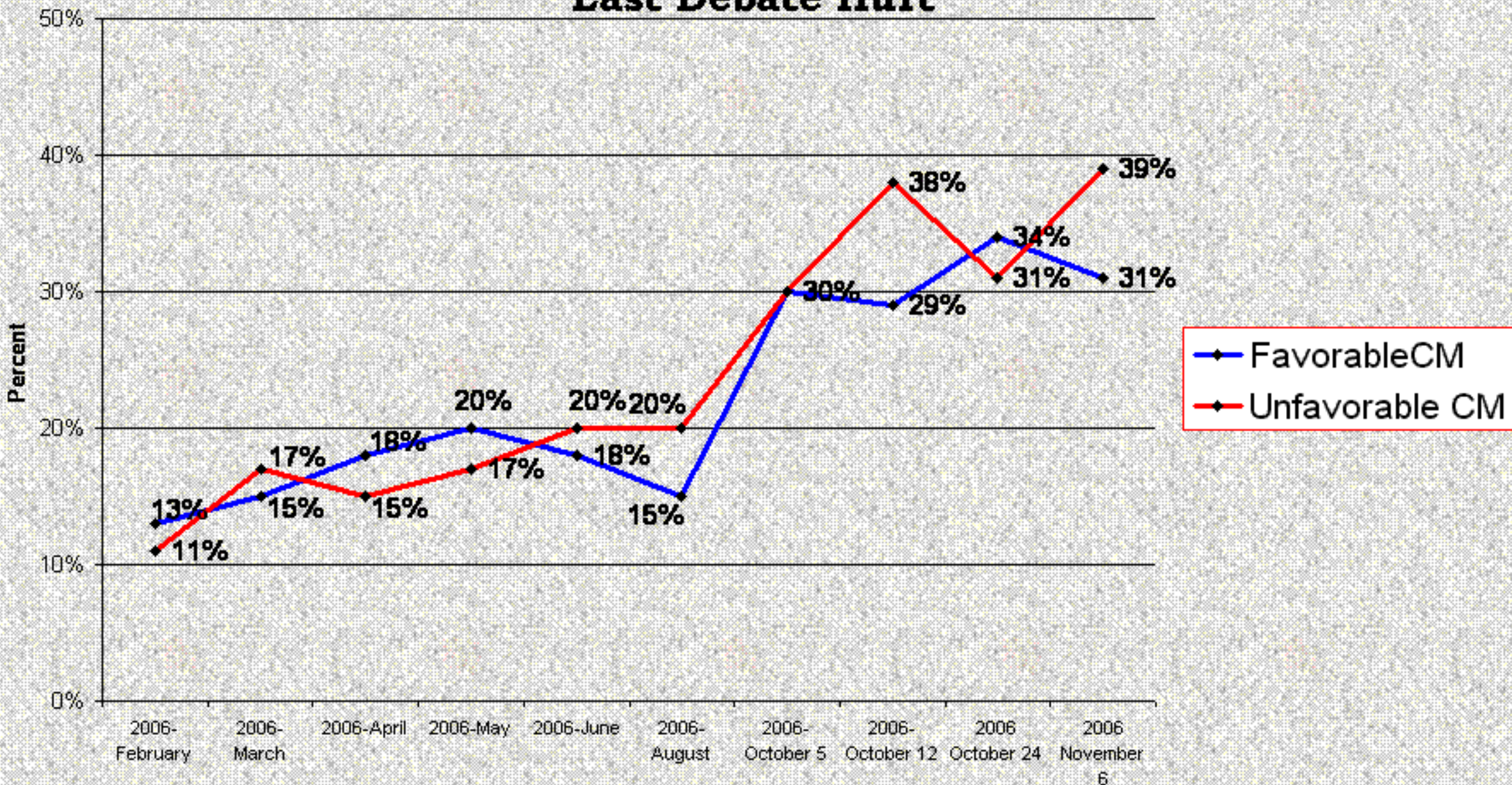


Favorability Ratings of Republican Kerry Healey

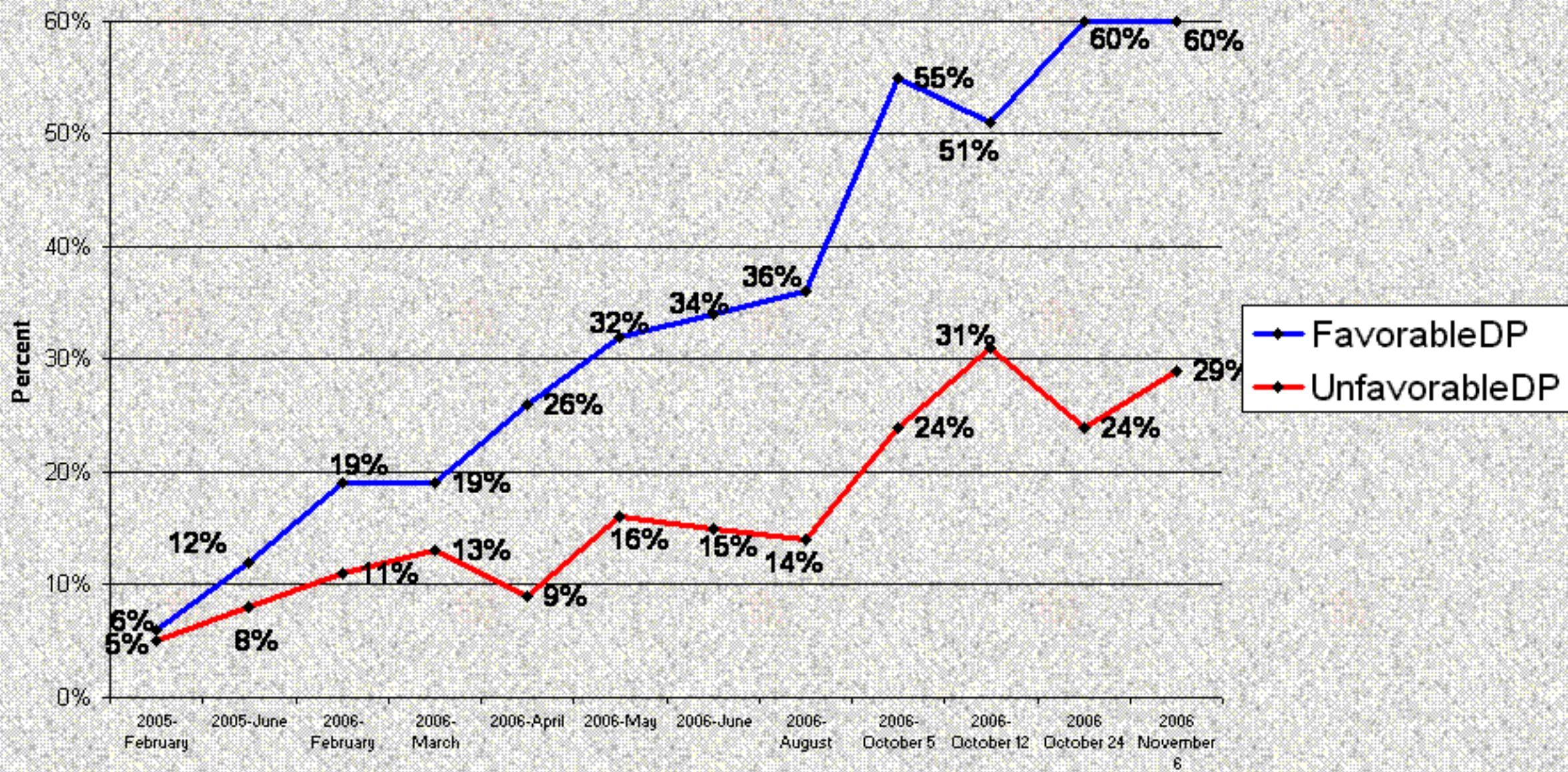
"Highest Unfavorable on Record, Although Favorable Improves"



Favorability Ratings of Independent Christy Mihos "Last Debate Hurt"

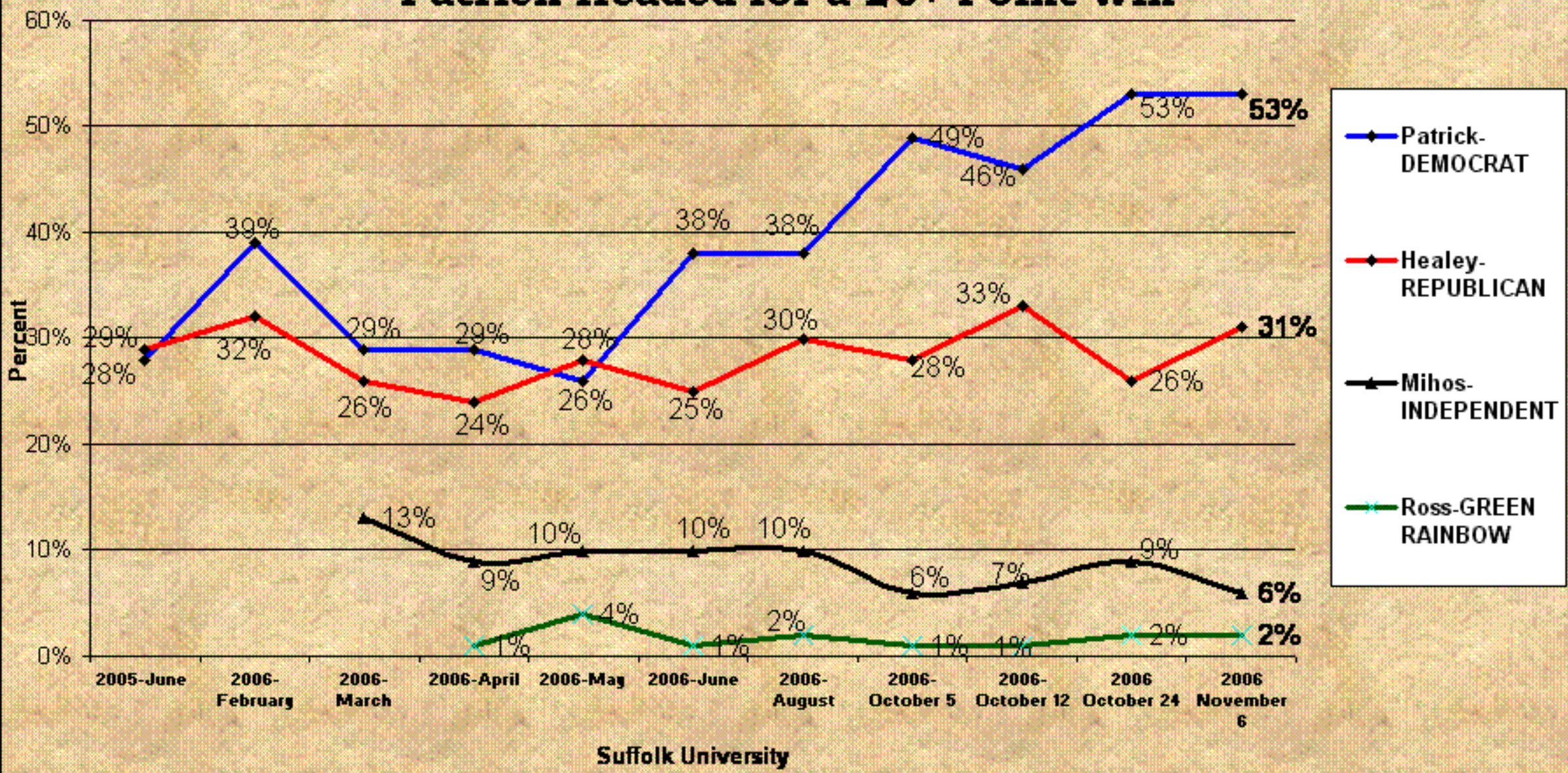


Favorability Ratings of Democrat Deval Patrick "Textbook Favorability"

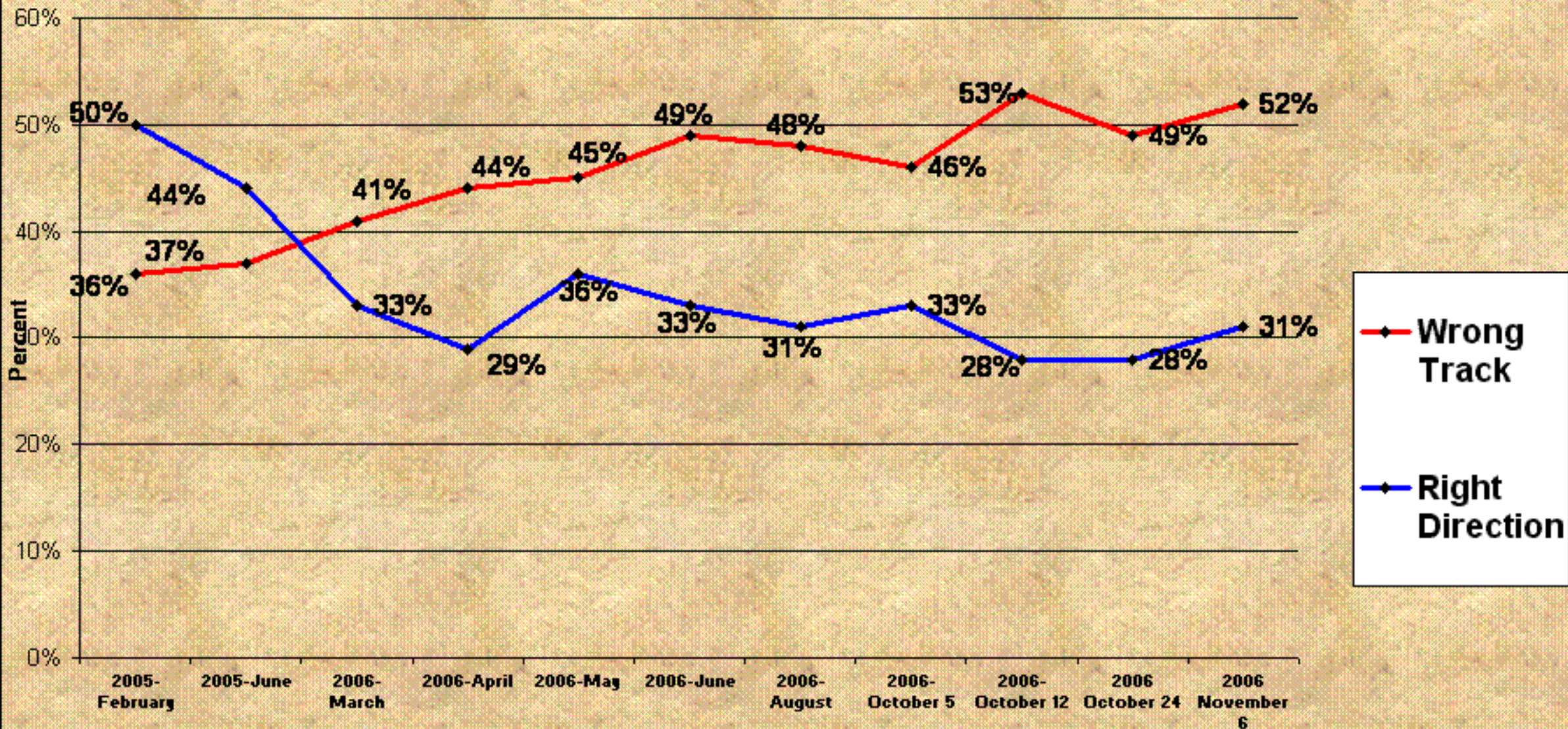


Ballot Test Governor

Patrick Headed for a 20+ Point Win



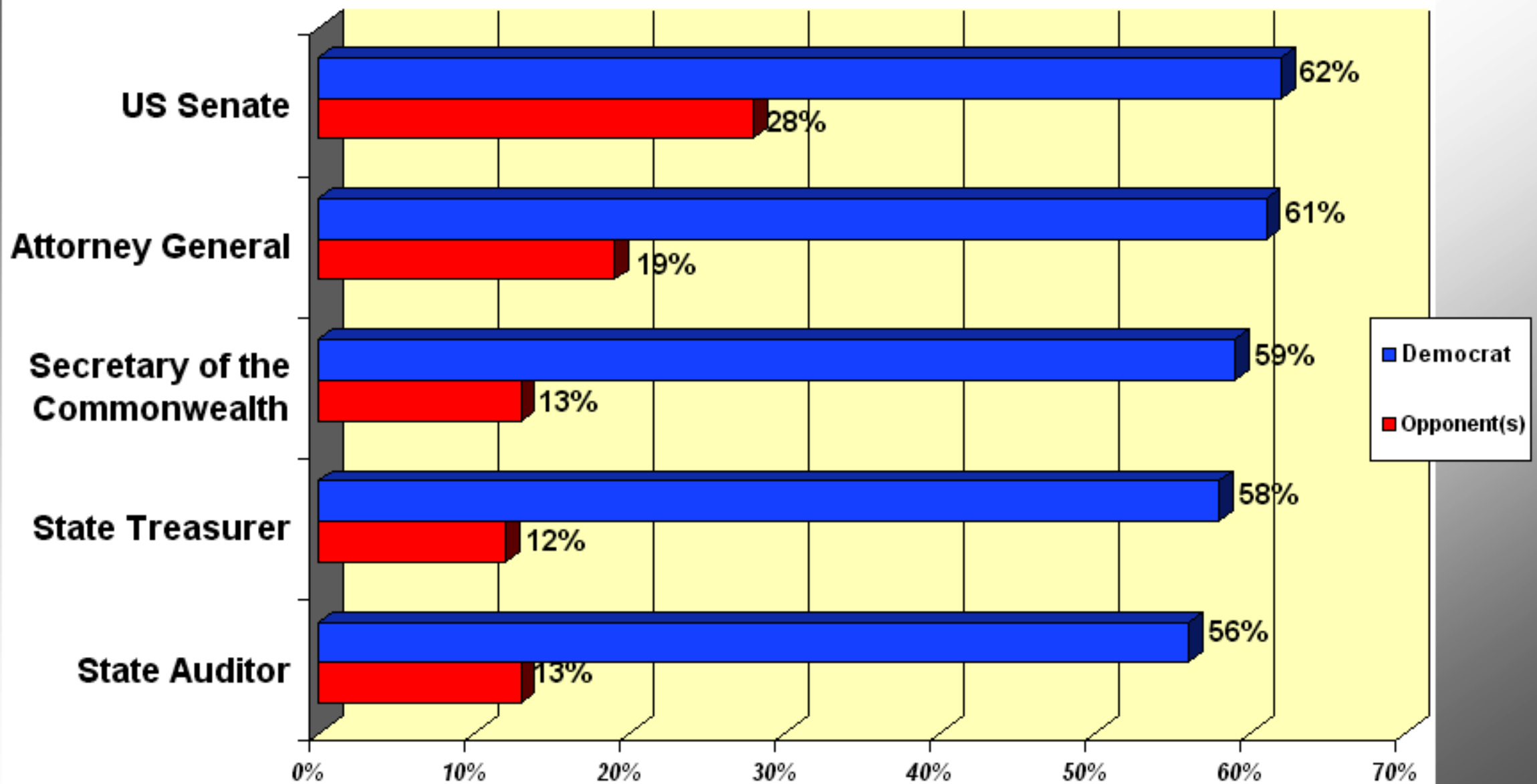
Direction of the Commonwealth Wrong Track.



Suffolk University

Democratic Statewide Offices

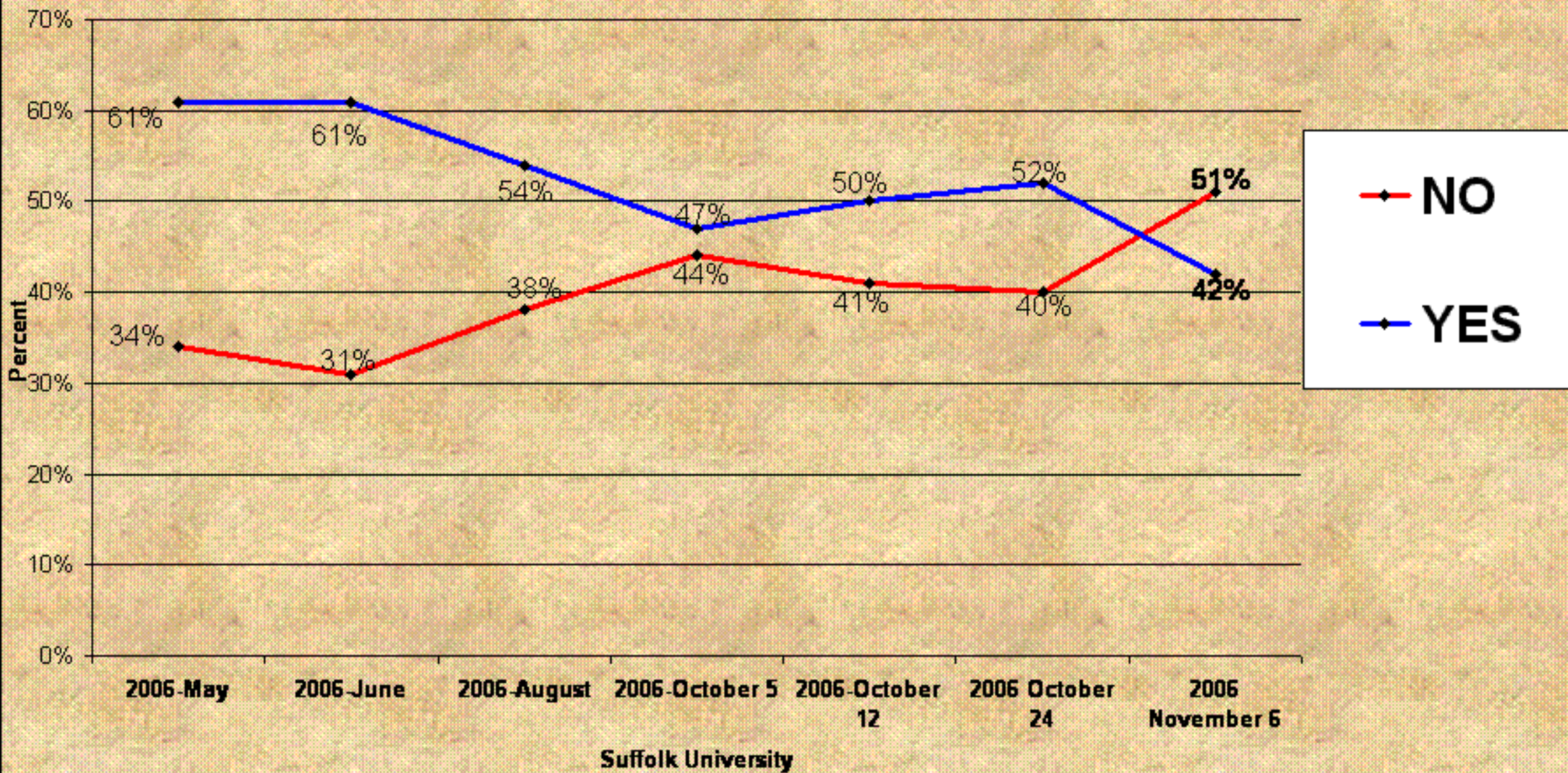
Kennedy, Coakley, Galvin, Cahill, & DeNucci With Large Leads Over Opponents



Ballot Question #1

Sale of Wine By Food Stores

"No" Rallies Late As Doubts Are Raised

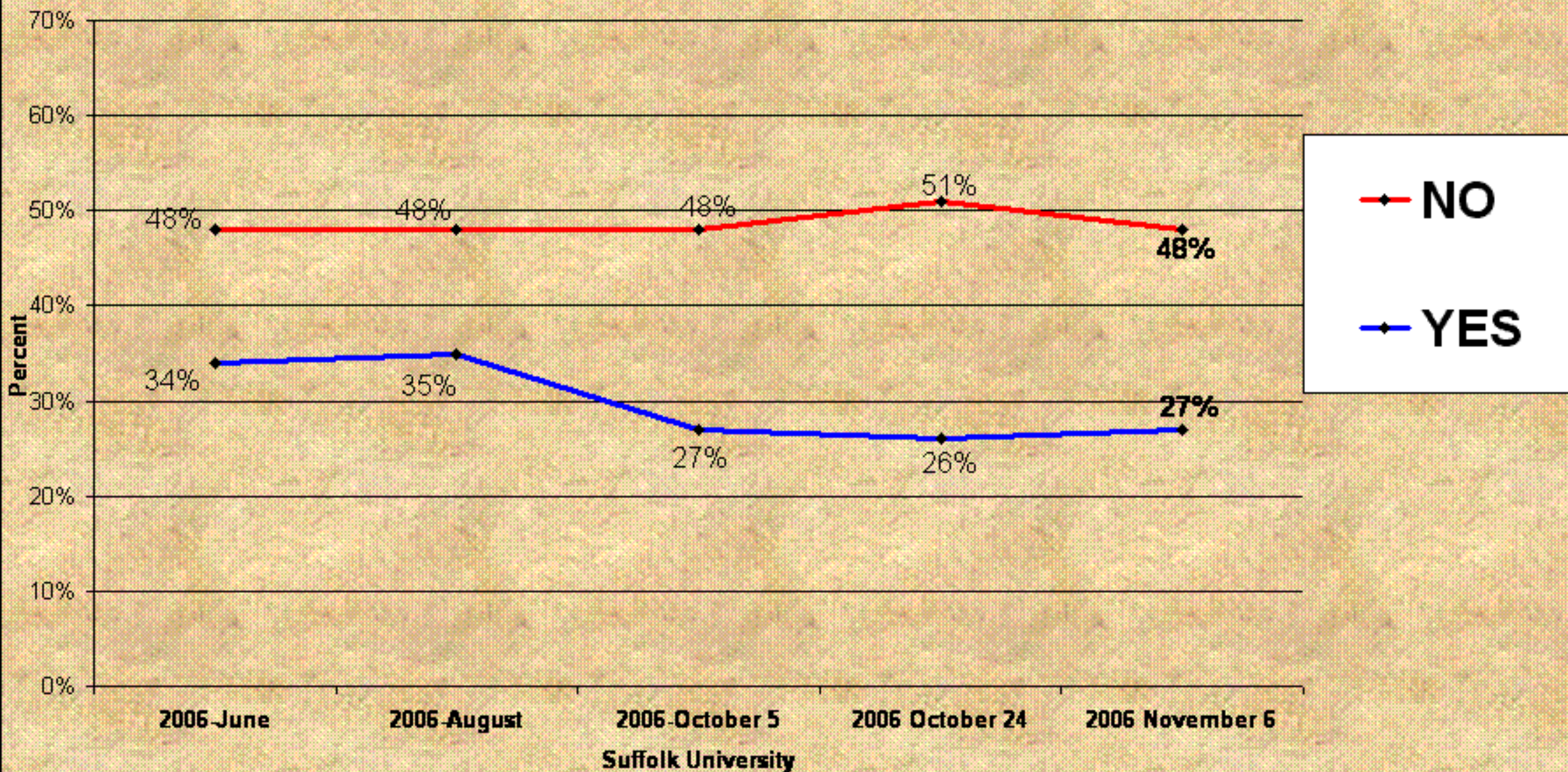


Suffolk University

Ballot Question #2

Nomination of Candidates for Public Office

"No" Continues to Prevail



Ballot Question #3

Family Child Care Providers

"Yes" Regains the Lead in a Close One.

