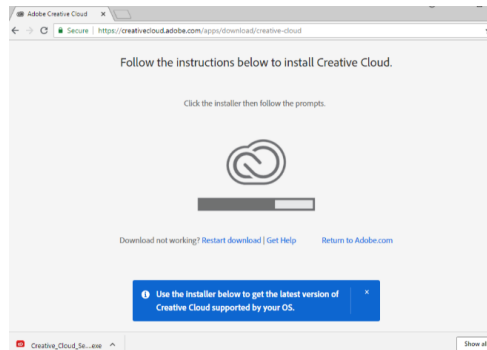


Installing the Adobe Creative Cloud desktop application

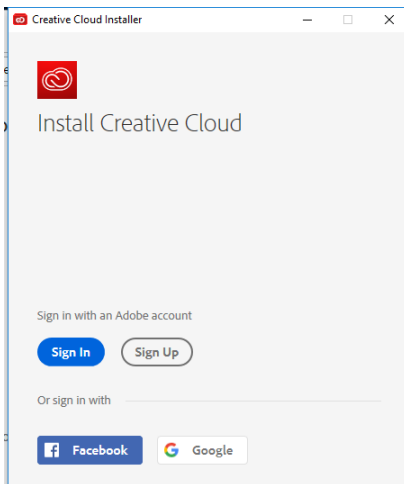
Go to the [Adobe Creative Cloud desktop application page](#) and follow the instructions to install Creative Cloud.

Adobe will download the appropriate install based on your OS

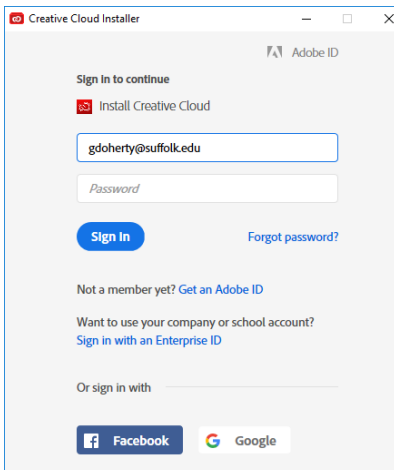


Double click on the Creative Cloud installer

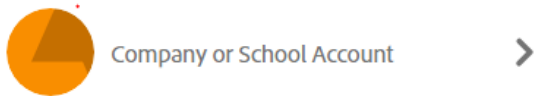
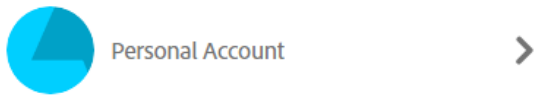
Click Sign In:



Type in your full Suffolk email address:



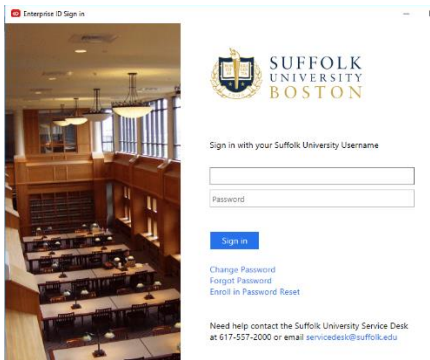
If you see an option to choose between a Personal Account or Company or School Account



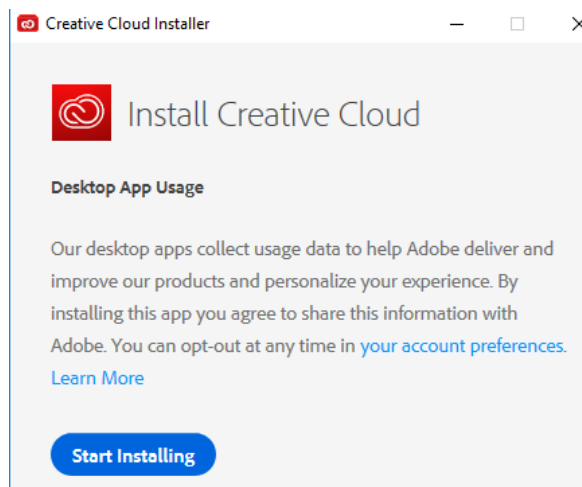
be sure to select **Company or School Account**.

You will be redirected you to our Single Sign On page:

Login with your Suffolk Credentials:



Click Start Installing button



Once installed (installation time may vary)

The Creative Cloud window will open, with a list of all apps.

You can choose to install, update or open

